

À des fins de recherche uniquement

Anticorps Polyclonal de lapin anti-UCHL1/PGP9.5



Numéro de catalogue: **CL488-14730**

Phare

Informations de base

Numéro de catalogue: CL488-14730	Numéro d'acquisition GenBank: BC000332	Méthode de purification: Purification par affinité contre l'antigène
Taille: 100ul , Concentration: 1000 µg/ml by Nanodrop;	Identification du gène (NCBI): 7345	Dilutions recommandées: IF 1:50-1:500
Hôte: Lapin	Nom complet: ubiquitin carboxyl-terminal esterase L1 (ubiquitin thiolesterase)	Excitation/Emission maxima wavelengths: 493 nm / 522 nm
Isotype: IgG	MW calculé: 25 kDa	
Immunogen Catalog Number: AG6490	MW observés: 27 kDa	

Applications

Applications testées: FC (Intra), IF	Contrôles positifs: IF : tissu cérébral de souris,
Spécificité de l'espèce: Humain, rat, souris	

Informations générales

UCHL1(Ubiquitin carboxyl-terminal hydrolase isozyme L1) is a member of a gene family whose products hydrolyze small C-terminal adducts of ubiquitin to generate the ubiquitin monomer. Expression of UCHL1 is highly specific to neurons and to cells of the diffuse neuroendocrine system and their tumors. It is present in all neurons(PMID: 6343558). This protein is present in brain at concentrations at least 50 times greater than in other organs and is a major protein component of neuronal cytoplasm (PMID:7217993). And UCHL1 is a Parkinson's disease susceptibility gene (PMID:15048890).

Stockage

Stockage:
Stocker à -20 °C. Éviter toute exposition à la lumière.
Tampon de stockage:
PBS avec glycérol à 50 %, Proclin300 à 0,05 % et BSA à 0,5 %, pH 7,3.
L'aliquotage n'est pas nécessaire pour le stockage à -20C

***** Les 20ul contiennent 0,1% de BSA.**

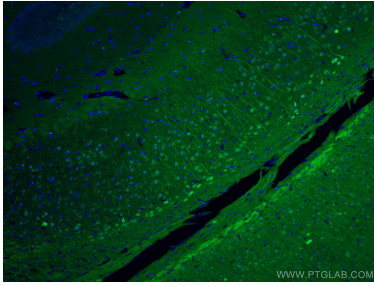
For technical support and original validation data for this product please contact:

T: 1 (888) 4PTGLAB (1-888-478-4522) (toll free in USA), or 1(312) 455-8498 (outside USA)

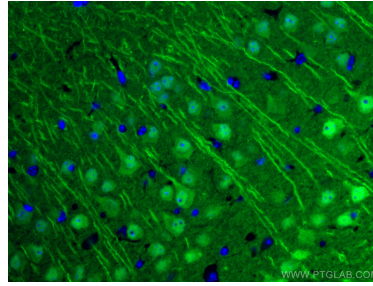
E: proteintech@ptglab.com
W: ptglab.com

This product is exclusively available under Proteintech Group brand and is not available to purchase from any other manufacturer.

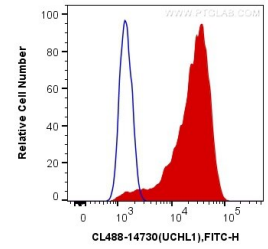
Données de validation sélectionnées



Immunofluorescent analysis of (4% PFA) fixed mouse brain tissue using CoraLite® Plus 488 UCHL1/PGP9.5 antibody (CL488-14730) at dilution of 1:200.



Immunofluorescent analysis of (4% PFA) fixed mouse brain tissue using CoraLite® Plus 488 UCHL1/PGP9.5 antibody (CL488-14730) at dilution of 1:200.



1X10⁶ Y79 cells were intracellularly stained with 0.4 ug CoraLite® Plus 488 Anti-Human UCHL1/PGP9.5 (CL488-14730) (red), or 0.4 ug Control Antibody. Cells were fixed with 4% PFA and permeabilized with Flow Cytometry Perm Buffer (PF00011-C).