

À des fins de recherche uniquement

# Anticorps Polyclonal de lapin anti-Galectin-3



Numéro de catalogue: CL488-14979

Phare

1 Publications

## Informations de base

Numéro de catalogue: CL488-14979	Numéro d'acquisition GenBank: BC001120	Méthode de purification: Purification par affinité contre l'antigène
Taille: 100ul , Concentration: 1000 µg/ml by Nanodrop;	Identification du gène (NCBI): 3958	Dilutions recommandées: IF 1:50-1:500
Hôte: Lapin	Nom complet: lectin, galactoside-binding, soluble, 3	Excitation/Emission maxima wavelengths: 493 nm / 522 nm
Isotype: IgG	MW calculé: 26 kDa	
Immunogen Catalog Number: AG6891	MW observés: 31 kDa	

## Applications

Applications testées: FC (Intra), IF	Contrôles positifs: IF : cellules HeLa,
Demandes citées: FC	
Spécificité de l'espèce: Humain, rat, souris	
Espèces citées: souris	

## Informations générales

Galectins are a family of animal lectins defined by shared characteristic amino-acid sequences and affinity for  $\beta$ -galactose-containing oligosaccharides (PMID: 8063692). Galectin-3, a member of the  $\beta$ -galactoside-binding proteins, contains one carbohydrate recognition domain (CRD) and a proline- and glycine-rich N-terminal domain through which is able to form oligomers (PMID: 14758078). Galectin-3 is widely expressed in many normal tissues and a variety of tumors. It is found intracellularly in nucleus and cytoplasm or secreted outside of cell, being present on the cell surface or in the extracellular space (PMID: 16478649). Galectin-3 is involved in various biological processes including cell growth, adhesion, differentiation, apoptosis, angiogenesis, immune response, neoplastic transformation and metastasis (PMID: 16478649; 14758078).

## Publications notables

Autrice	Pubmed ID	Journal	Application
Lingxin Zhu	36880731	J Cell Biol	FC

## Stockage

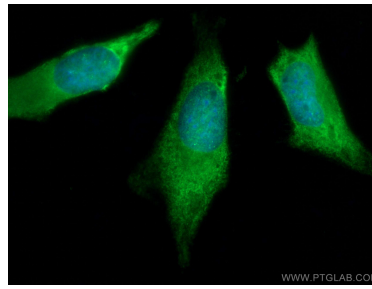
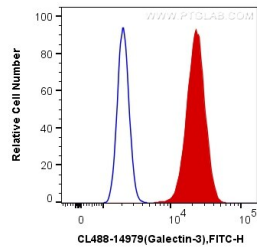
**Stockage:**  
Stocker à -20 °C. Éviter toute exposition à la lumière. Stable pendant un an après l'expédition.  
**Tampon de stockage:**  
PBS avec glycérol à 50 %, Proclin300 à 0,05 % et BSA à 0,5 %, pH 7,3.  
L'aliquotage n'est pas nécessaire pour le stockage à -20C

\*\*\* Les 20ul contiennent 0,1% de BSA.

For technical support and original validation data for this product please contact:  
T: 1 (888) 4PTGLAB (1-888-478-4522) (toll free in USA), or 1(312) 455-8498 (outside USA)  
E: proteintech@ptglab.com  
W: ptglab.com

This product is exclusively available under Proteintech Group brand and is not available to purchase from any other manufacturer.

## Données de validation sélectionnées



$1 \times 10^6$  HeLa cells were intracellularly stained with 0.4 ug CoraLite® Plus 488 Anti-Human Galectin-3 (CL488-14979) (red), or 0.4 ug Control Antibody. Cells were fixed with 4% PFA and permeabilized with Flow Cytometry Perm Buffer (PF00011-C).

Immunofluorescent analysis of (-20°C Methanol) fixed HeLa cells using CoraLite® Plus 488 Galectin-3 antibody (CL488-14979) at dilution of 1:200.