

À des fins de recherche uniquement

Anticorps Polyclonal de lapin anti-HLA class I ABC



Numéro de catalogue: **CL488-15240**

Informations de base

Numéro de catalogue: CL488-15240	Numéro d'acquisition GenBank: BC003069	Méthode de purification: Purification par affinité contre l'antigène
Taille: 100ul , Concentration: 1000 µg/ml by Nanodrop;	Identification du gène (NCBI): 3105	Dilutions recommandées: IF 1:50-1:500
Hôte: Lapin	Nom complet: major histocompatibility complex, class I, A	Excitation/Emission maxima wavelengths: 493 nm / 522 nm
Isotype: IgG	MW calculé 41 kDa	
Immunogen Catalog Number: AG7370	MW observés: 44 kDa	

Applications

Applications testées: FC, IF	Contrôles positifs: IF : cellules HepG2,
Spécificité de l'espèce: Humain	

Informations générales

Human major histocompatibility complex (MHC) antigens, also referred to as human leukocyte antigens (HLA), are encoded by genes located on the short arm of chromosome 6 (6p21.3). There are two classes of HLA antigens: class I (HLA-A, B and C) and class II (HLA-D). This class I molecules are polymorphic membrane glycoproteins composed of a heavy (alpha) chain (44 kDa) which is encoded by a HLA class I gene (HLA-A, B or C), and β 2-microglobulin light (beta) chain (12 kDa). They are involved in the presentation of foreign antigens to the immune system. (PMID: 667938; 3375250)

Stockage

Stockage:
Stocker à -20 °C. Éviter toute exposition à la lumière.
Tampon de stockage:
PBS avec glycérol à 50 %, Proclin300 à 0,05 % et BSA à 0,5 %, pH 7,3.
L'aliquotage n'est pas nécessaire pour le stockage à -20C

***** Les 20ul contiennent 0,1% de BSA.**

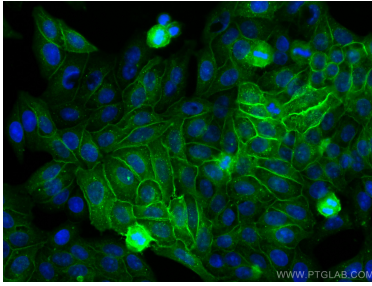
For technical support and original validation data for this product please contact:

T: 1 (888) 4PTGLAB (1-888-478-4522) (toll free in USA), or 1(312) 455-8498 (outside USA)

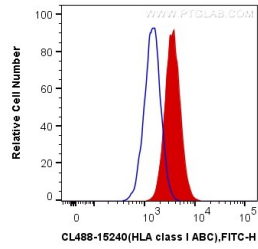
E: proteintech@ptglab.com
W: ptglab.com

This product is exclusively available under Proteintech Group brand and is not available to purchase from any other manufacturer.

Données de validation sélectionnées



Immunofluorescent analysis of (-20°C Methanol) fixed HepG2 cells using CoraLite® Plus 488 HLA class I ABC antibody (CL488-15240) at dilution of 1:200.



1X10⁶ HepG2 cells were surface stained with 0.4 ug CoraLite® Plus 488 Anti-Human HLA class I ABC (CL488-15240) (red), or 0.4 ug Control Antibody. Cells were not fixed.