

À des fins de recherche uniquement

Anticorps Polyclonal de lapin anti-TIPE2



Numéro de catalogue: **CL488-15940**

Phare

Informations de base

Numéro de catalogue: CL488-15940	Numéro d'acquisition GenBank: BC063014	Méthode de purification: Purification par affinité contre l'antigène
Taille: 100ul , Concentration: 1000 µg/ml by Nanodrop;	Identification du gène (NCBI): 79626	Excitation/Emission maxima wavelengths: 493 nm / 522 nm
Hôte: Lapin	Nom complet: tumor necrosis factor, alpha-induced protein 8-like 2	
Isotype: IgG	MW calculé 184 aa, 21 kDa	
Immunogen Catalog Number: AG7964	MW observés: 18-20 kDa	

Applications

Applications testées:
FC (Intra)

Spécificité de l'espèce:
Humain, rat, souris

Informations générales

TIPE2 (TNF- α -inducible protein 8-like 2, or TNFAIP8L2), a negative immune regulator, is essential for maintaining immune homeostasis. TIPE2 shares considerable sequence homology with members of the tumor necrosis factor- α -inducible protein 8 (TNFAIP8) family, which are thought to regulate cellular and immune homeostasis. TIPE2 acts as a negative regulator of Toll-like receptor and T-cell receptor function and is preferentially expressed in lymphoid tissues. TIPE2 plays an essential role for a signal transduction pathway that links inflammatory immune response to specific conditions after cerebral ischemia

Stockage

Stockage:
Stocker à -20 °C. Éviter toute exposition à la lumière. Stable pendant un an après l'expédition.

Tampon de stockage:
PBS avec glycérol à 50 %, Proclin300 à 0,05 % et BSA à 0,5 %, pH 7,3.
L'aliquotage n'est pas nécessaire pour le stockage à -20C

***** Les 20ul contiennent 0,1% de BSA.**

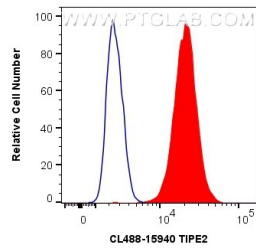
For technical support and original validation data for this product please contact:

T: 1 (888) 4PTGLAB (1-888-478-4522) (toll free in USA), or 1(312) 455-8498 (outside USA)

E: proteintech@ptglab.com
W: ptglab.com

This product is exclusively available under Proteintech Group brand and is not available to purchase from any other manufacturer.

Données de validation sélectionnées



1X10⁶ THP-1 cells were intracellularly stained with 0.4 ug CoraLite® Plus 488 Anti-Human TIPE2 (CL488-15940) (red), or 0.4 ug Isotype Control. Cells were fixed with 4% PFA and permeabilized with Flow Cytometry Perm Buffer (PF00011-C).