

À des fins de recherche uniquement

# Anticorps Polyclonal de lapin anti-Glucagon



Numéro de catalogue: **CL488-15954**

## Informations de base

Numéro de catalogue: CL488-15954	Numéro d'acquisition GenBank: BC005278	Méthode de purification: Purification par affinité contre l'antigène
Taille: 100ul , Concentration: 1000 µg/ml by Nanodrop;	Identification du gène (NCBI): 2641	Dilutions recommandées: IF 1:50-1:500
Hôte: Lapin	Nom complet: glucagon	Excitation/Emission maximale wavelengths: 493 nm / 522 nm
Isotype: IgG	MW calculé 180 aa, 21 kDa	
Immunogen Catalog Number: AG8677		

## Applications

Applications testées: IF	Contrôles positifs: IF : tissu pancréatique de souris,
Spécificité de l'espèce: Humain, rat, souris	

## Informations générales

Glucagon is a 29-amino acid peptide hormone secreted from the pancreatic alpha cells with a powerful stimulatory effect on hepatic glucose production acting to increase plasma glucose levels. Glucagon is best known as the counter-regulatory hormone to insulin, and normal glucose homeostasis depends largely on the balanced secretion of insulin and glucagon from the pancreatic beta and alpha cells, respectively. The regulation of glucose metabolism by glucagon is mediated by its direct action on the peripheral tissues such as the liver and also by the brain. Glucagon is also released postprandially in a transient manner, which was shown to be involved in inhibition of food intake via reduction of meal size.

## Stockage

**Stockage:**  
Stocker à -20 °C. Éviter toute exposition à la lumière.  
**Tampon de stockage:**  
PBS avec glycérol à 50 %, Proclin300 à 0,05 % et BSA à 0,5 %, pH 7,3.  
L'aliquotage n'est pas nécessaire pour le stockage à -20C

**\*\*\* Les 20ul contiennent 0,1% de BSA.**

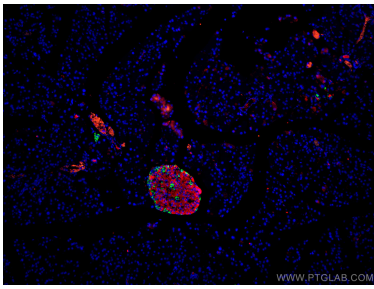
For technical support and original validation data for this product please contact:

T: 1 (888) 4PTGLAB (1-888-478-4522) (toll free in USA), or 1(312) 455-8498 (outside USA)

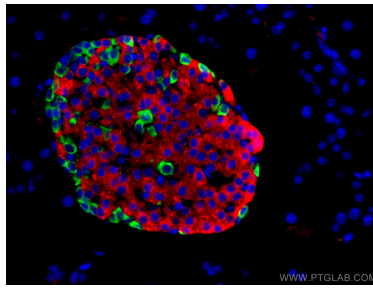
E: [proteintech@ptglab.com](mailto:proteintech@ptglab.com)  
W: [ptglab.com](http://ptglab.com)

**This product is exclusively available under Proteintech Group brand and is not available to purchase from any other manufacturer.**

## Données de validation sélectionnées



Immunofluorescent analysis of (4% PFA) fixed mouse pancreas tissue using CoraLite® Plus 488 Glucagon antibody (CL488-15954) at dilution of 1:200, CoraLite®594 INS antibody (CL594-15848, red).



Immunofluorescent analysis of (4% PFA) fixed mouse pancreas tissue using CoraLite® Plus 488 Glucagon antibody (CL488-15954) at dilution of 1:200, CoraLite®594 INS antibody (CL594-15848, red).