

À des fins de recherche uniquement

Anticorps Polyclonal de lapin anti-NBR1



Numéro de catalogue: **CL488-16004** **Phare**

Informations de base

Numéro de catalogue: CL488-16004	Numéro d'acquisition GenBank: BC009808	Méthode de purification: Purification par affinité contre l'antigène
Taille: 100ul , Concentration: 1000 µg/ml by Nanodrop;	Identification du gène (NCBI): 4077	Dilutions recommandées: IF 1:50-1:500
Hôte: Lapin	Nom complet: neighbor of BRCA1 gene 1	Excitation/Emission maxima wavelengths: 493 nm / 522 nm
Isotype: IgG	MW calculé: 966 aa, 107 kDa	
Immunogen Catalog Number: AG8652	MW observés: 140 kDa	

Applications

Applications testées: FC (Intra), IF	Contrôles positifs: IF : cellules HeLa,
Spécificité de l'espèce: Humain, rat, singe, souris	

Informations générales

NBR1, also named as 1A13B, KIAA0049 and M1752, acts probably as a receptor for selective autophagosomal degradation of ubiquitinated targets. NBR1 and P62 can bind to autophagic effector proteins (Atg8 in yeast, MAP1LC3 protein family in mammals) anchored in the membrane of autophagosomes. It is a highly conserved multidomain scaffold protein with proposed roles in endocytic trafficking and selective autophagy. NBR1 is a novel PB1 adapter in Th2 differentiation and asthma. It functions as an autophagy receptor involved in targeting ubiquitinated proteins for degradation. It also has a dual role as a scaffold protein to regulate growth-factor receptor and downstream signaling pathways. Observed MW of NBR1 is 140 kDa (PMID: 22654911, PMID: 22484440).

Stockage

Stockage:
Stocker à -20 °C. Éviter toute exposition à la lumière. Stable pendant un an après l'expédition.
Tampon de stockage:
PBS avec glycérol à 50 %, Proclin300 à 0,05 % et BSA à 0,5 %, pH 7,3.
L'aliquotage n'est pas nécessaire pour le stockage à -20C

***** Les 20ul contiennent 0,1% de BSA.**

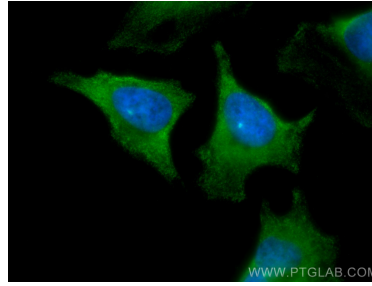
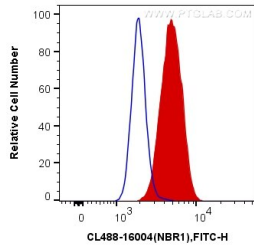
For technical support and original validation data for this product please contact:

T: 1 (888) 4PTGLAB (1-888-478-4522) (toll free in USA), or 1(312) 455-8498 (outside USA)

E: proteintech@ptglab.com
W: ptglab.com

This product is exclusively available under Proteintech Group brand and is not available to purchase from any other manufacturer.

Données de validation sélectionnées



1×10^6 HeLa cells were intracellularly stained with 0.4 μ g CoraLite® Plus 488 Anti-Human NBR1 (CL488-16004) (red), or 0.4 μ g Control Antibody. Cells were fixed with 4% PFA and permeabilized with Flow Cytometry Perm Buffer (PF00011-C).

Immunofluorescent analysis of (-20°C Methanol) fixed HeLa cells using CoraLite® Plus 488 NBR1 antibody (CL488-16004) at dilution of 1:200.