

À des fins de recherche uniquement

# Anticorps Polyclonal de lapin anti-CISD1



Numéro de catalogue: **CL488-16006**

Phare

## Informations de base

Numéro de catalogue: CL488-16006	Numéro d'acquisition GenBank: BC007043	Méthode de purification: Purification par affinité contre l'antigène
Taille: 100ul , Concentration: 1000 µg/ml by Nanodrop;	Identification du gène (NCBI): 55847	Excitation/Emission maxima wavelengths: 493 nm / 522 nm
Hôte: Lapin	Nom complet: CDGSH iron sulfur domain 1	
Isotype: IgG	MW calculé: 108 aa, 12 kDa	
Immunogen Catalog Number: AG8680	MW observés: 14-17 kDa	

## Applications

Applications testées:  
FC (Intra)

Spécificité de l'espèce:  
Humain, rat, souris

## Informations générales

MitoNEET, also named CISD1, belongs to a previously uncharacterized ancient family of proteins for which the hallmark is the presence of a unique 39 amino acid CDGSH domain. It is a single-pass type III membrane protein, located in mitochondrion outer membrane and may play a role in regulating maximal capacity for electron transport and oxidative phosphorylation. MitoNEET is a recently identified drug target for a commonly prescribed diabetes drug, Pioglitazone. This antibody recognizing MitoNEET (calculated 12 kDa) as a 17 kDa protein may be due to its posttranslational modification or metal binding activity.

## Stockage

Stockage:  
Stocker à -20 °C. Éviter toute exposition à la lumière. Stable pendant un an après l'expédition.

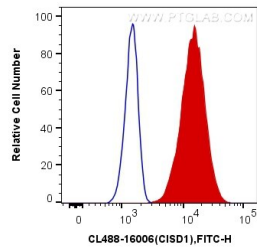
Tampon de stockage:  
PBS avec glycérol à 50 %, Proclin300 à 0,05 % et BSA à 0,5 %, pH 7,3.  
L'aliquotage n'est pas nécessaire pour le stockage à -20C

\*\*\* Les 20ul contiennent 0,1% de BSA.

For technical support and original validation data for this product please contact:  
T: 1 (888) 4PTGLAB (1-888-478-4522) (toll free in USA), or 1(312) 455-8498 (outside USA) E: proteintech@ptglab.com W: ptglab.com

This product is exclusively available under Proteintech Group brand and is not available to purchase from any other manufacturer.

## Données de validation sélectionnées



1X10<sup>6</sup> HeLa cells were intracellularly stained with 0.4 ug Coralite® Plus 488 Anti-Human CISD1 (CL488-16006) (red), or 0.4 ug Control Antibody. Cells were fixed with 4% PFA and permeabilized with Flow Cytometry Perm Buffer (PF00011-C).