

À des fins de recherche uniquement

Anticorps Polyclonal de lapin anti-Desmin



Numéro de catalogue: **CL488-16520**

Informations de base

Numéro de catalogue: CL488-16520	Numéro d'acquisition GenBank: BC032116	Méthode de purification: Purification par affinité contre l'antigène
Taille: 100ul, Concentration: 1000 µg/ml by Nanodrop;	Identification du gène (NCBI): 1674	Excitation/Emission maxima wavelengths: 493 nm / 522 nm
Hôte: Lapin	Nom complet: desmin	
Isotype: IgG	MW calculé: 470 aa, 54 kDa	
Immunogen Catalog Number: AG9742	MW observés: 52-53 kDa	

Applications

Applications testées:
FC (Intra), IF
Spécificité de l'espèce:
Humain, rat, souris

Informations générales

Desmin is the main intermediate filament protein in skeletal and cardiac muscle cells and is essential for both the structural integrity and the survival of muscle cells. As an abundant muscle-specific protein, desmin has been widely used as a marker of muscle derived tumors. Anti-desmin is also valuable in the differential diagnosis of tumors of uncertain origin.

Stockage

Stockage:
Stocker à -20 °C. Éviter toute exposition à la lumière.
Tampon de stockage:
PBS avec glycérol à 50 %, Proclin300 à 0,05 % et BSA à 0,5 %, pH 7,3.
L'aliquotage n'est pas nécessaire pour le stockage à -20C

***** Les 20ul contiennent 0,1% de BSA.**

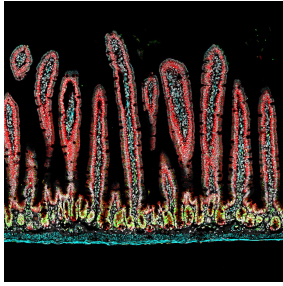
For technical support and original validation data for this product please contact:

T: 1 (888) 4PTGLAB (1-888-478-4522) (toll free in USA), or 1(312) 455-8498 (outside USA)

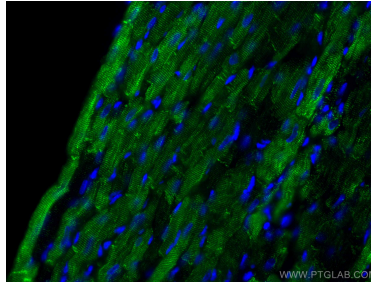
E: proteintech@ptglab.com
W: ptglab.com

This product is exclusively available under Proteintech Group brand and is not available to purchase from any other manufacturer.

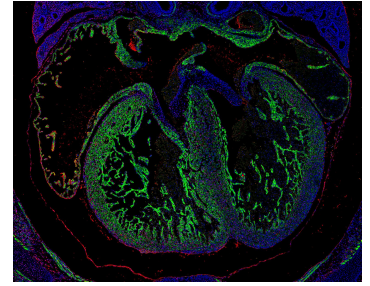
Données de validation sélectionnées



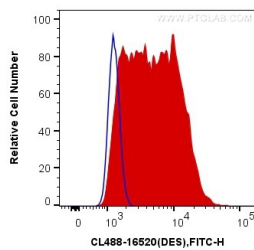
Adult mouse small intestine was co-stained with desmin (CL488-16520, in cyan), E-cadherin (20874-1-AP, in red), and PCNA (60097-1-Ig, in green). Desmin marks the stromal cells and smooth muscle, E-cadherin marks the gut epithelial cells, and PCNA marks proliferating cells. The image was created in paid partnership with @Immunofluorescence on Instagram.



Immunofluorescent analysis of (4% PFA) fixed rat heart tissue using CoraLite® Plus 488 Desmin antibody (CL488-16520) at dilution of 1:100.



E14.5 FFPE mouse heart stained for Desmin (green, Cat. No CL488-16520) and PCNA (red, Cat. No 60097-1-Ig). Desmin was conjugated to CoraLite-488 fluorescent dye and stains cardiomyocytes (heart muscle cells). PCNA stains proliferating cells, which are numerous in the developing heart. In this image, the four chambers of the heart can be easily visualized. Image credit: @Immunofluorescence on Instagram.



1X10⁶ C2C12 cells were intracellularly stained with 0.4 ug CoraLite® Plus 488 Anti-Human Desmin (CL488-16520) (red), or 0.4 ug Control Antibody. Cells were fixed with 4% PFA and permeabilized with Flow Cytometry Perm Buffer (PF00011-C).