

À des fins de recherche uniquement

Anticorps Polyclonal de lapin anti-Beta Catenin



Numéro de catalogue: **CL488-17565** **Phare**

Informations de base

Numéro de catalogue: CL488-17565	Numéro d'acquisition GenBank: BC058926	Méthode de purification: Purification par affinité contre l'antigène
Taille: 100ul , Concentration: 1000 µg/ml by Nanodrop;	Identification du gène (NCBI): 1499	Dilutions recommandées: IF 1:50-1:500
Hôte: Lapin	Nom complet: catenin (cadherin-associated protein), beta 1, 88kDa	Excitation/Emission maxima wavelengths: 493 nm / 522 nm
Isotype: IgG	MW calculé: 781 aa, 86 kDa	
Immunogen Catalog Number: AG11763	MW observés: 92 kDa	

Applications

Applications testées: FC (Intra), IF	Contrôles positifs: IF : cellules MCF-7, cellules T-47D
Spécificité de l'espèce: Humain, rat, souris	

Informations générales

β-Catenin, also known as CTNNB1, is an evolutionarily conserved, multifunctional intracellular protein. β-Catenin was originally identified in cell adherens junctions (AJs) where it functions to bridge the cytoplasmic domain of cadherins to α-catenin and the actin cytoskeleton. Besides its essential role in the AJs, β-catenin is also a key downstream component of the canonical Wnt pathway that plays diverse and critical roles in embryonic development and adult tissue homeostasis. The Wnt/β-catenin pathway is also involved in the activation of other intracellular messengers such as calcium fluxes, JNK, and SRC kinases. Deregulation of β-catenin activity is associated with multiple diseases including cancers. (PMID: 22617422; 18334222)

Stockage

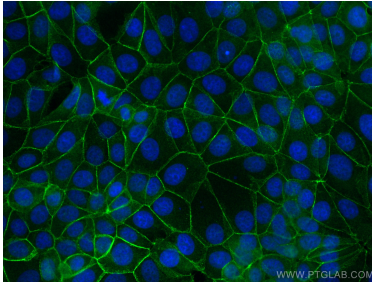
Stockage:
Stocker à -20 °C. Éviter toute exposition à la lumière.
Tampon de stockage:
PBS avec glycérol à 50 %, Proclin300 à 0,05 % et BSA à 0,5 %, pH 7,3.
L'aliquotage n'est pas nécessaire pour le stockage à -20C

***** Les 20ul contiennent 0,1% de BSA.**

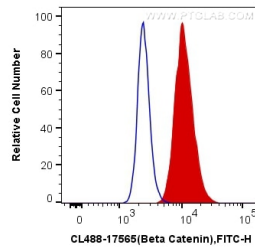
For technical support and original validation data for this product please contact:
T: 1 (888) 4PTGLAB (1-888-478-4522) (toll free in USA), or 1(312) 455-8498 (outside USA)
E: proteintech@ptglab.com
W: ptglab.com

This product is exclusively available under Proteintech Group brand and is not available to purchase from any other manufacturer.

Données de validation sélectionnées



Immunofluorescent analysis of (4% PFA) fixed MCF-7 cells using CoraLite® Plus 488 Beta Catenin antibody (CL488-17565) at dilution of 1:200.



1X10⁶ MCF-7 cells were intracellularly stained with 0.4 ug CoraLite® Plus 488 Anti-Human Beta Catenin (CL488-17565) (red), or 0.4 ug Control Antibody. Cells were fixed with 4% PFA and permeabilized with Flow Cytometry Perm Buffer (PF00011-C).