

À des fins de recherche uniquement

Anticorps Polyclonal de lapin anti-LDHA-Specific



Numéro de catalogue: CL488-19987

Phare

Informations de base

Numéro de catalogue: CL488-19987	Numéro d'acquisition GenBank: NM_005566	Méthode de purification: Purification par affinité contre l'antigène
Taille: 100ul , Concentration: 1000 µg/ml by Nanodrop;	Identification du gène (NCBI): 3939	Dilutions recommandées: IF 1:50-1:500
Hôte: Lapin	Nom complet: lactate dehydrogenase A	Excitation/Emission maxima wavelengths: 493 nm / 522 nm
Isotype: IgG	MW calculé: 37 kDa	
	MW observés: 32-37 kDa	

Applications

Applications testées: FC (Intra), IF	Contrôles positifs: IF : cellules HepG2,
Spécificité de l'espèce: Humain, rat, souris	

Informations générales

Lactate dehydrogenase (LDH) is composed of A subunits predominate in skeletal muscle and B subunits are abundantly produced in brain and heart. The LDHA (lactate dehydrogenase A) and COPB1 (coatomer protein complex, subunit beta 1) genes, are involved in energy metabolism and protein transport processes. Both genes might play important roles in muscle development. It has some isoforms with the molecular mass of 27-40 kDa and can form a homotetramer (PMID:11276087). This antibody is specific to LDHA and has no cross reaction to LDHB and LDHC.

Stockage

Stockage:
Stocker à -20 °C. Éviter toute exposition à la lumière.
Tampon de stockage:
PBS avec glycérol à 50 %, Proclin300 à 0,05 % et BSA à 0,5 %, pH 7,3.
L'aliquotage n'est pas nécessaire pour le stockage à -20C

***** Les 20ul contiennent 0,1% de BSA.**

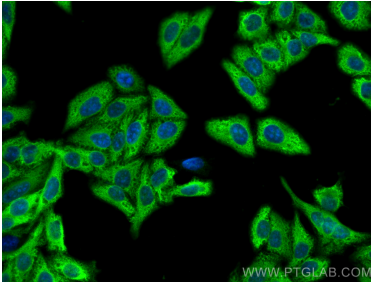
For technical support and original validation data for this product please contact:

T: 1 (888) 4PTGLAB (1-888-478-4522) (toll free in USA), or 1(312) 455-8498 (outside USA)

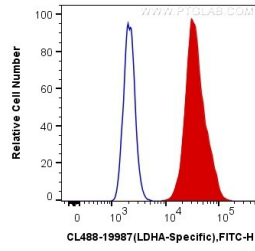
E: proteintech@ptglab.com
W: ptglab.com

This product is exclusively available under Proteintech Group brand and is not available to purchase from any other manufacturer.

Données de validation sélectionnées



Immunofluorescent analysis of (-20°C Methanol) fixed HepG2 cells using CoraLite® Plus 488 LDHA-Specific antibody (CL488-19987) at dilution of 1:200.



1X10⁶ HepG2 cells were intracellularly stained with 0.4 ug CoraLite® Plus 488 Anti-Human LDHA-Specific (CL488-19987) (red), or 0.4 ug Control Antibody. Cells were fixed with 4% PFA and permeabilized with Flow Cytometry Perm Buffer (PF00011-C).