

À des fins de recherche uniquement

# Anticorps Polyclonal de lapin anti-TET2



Numéro de catalogue: **CL488-21207** **Phare**

## Informations de base

<b>Numéro de catalogue:</b> CL488-21207	<b>Numéro d'acquisition GenBank:</b> BC150180	<b>Méthode de purification:</b> Purification par affinité contre l'antigène
<b>Taille:</b> 100ul , Concentration: 1000 µg/ml by Nanodrop;	<b>Identification du gène (NCBI):</b> 54790	<b>Excitation/Emission maxima wavelengths:</b> 493 nm / 522 nm
<b>Hôte:</b> Lapin	<b>Nom complet:</b> tet oncogene family member 2	
<b>Isotype:</b> IgG	<b>MW calculé:</b> 2002 aa, 224 kDa	
<b>Immunogen Catalog Number:</b> AG15583	<b>MW observés:</b> 130 kDa, 133 kDa, 224 kDa	

## Applications

**Applications testées:**  
FC (Intra)

**Spécificité de l'espèce:**  
Humain, souris

## Informations générales

TET2 is an enzyme which converts 5-methylcytosine (5-mC) to 5-hydroxymethylcytosine (5-hmC) in DNA and is important for normal myelopoiesis. TET2 mutations are frequently observed in myeloid malignancies, including myeloproliferative neoplasms. TET2 is broadly expressed in a variety of tissues. In healthy tissues, TET2 expression was shown to be elevated in hematopoietic cells with highest expression in granulocytes. Three isoforms of TET2 exists due to the alternative splicing. 220-250 kDa bands represent the full-length isoform; 130-133 kDa bands represent the nuclear isoforms of TET2. (PMID: 24615693) This antibody recognizes all three isoforms of TET2.

## Stockage

**Stockage:**  
Stocker à -20 °C. Éviter toute exposition à la lumière.

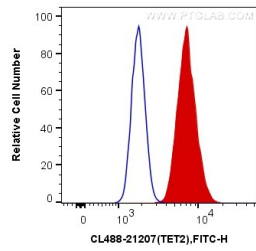
**Tampon de stockage:**  
PBS avec glycérol à 50 %, Proclin300 à 0,05 % et BSA à 0,5 %, pH 7,3.  
L'aliquotage n'est pas nécessaire pour le stockage à -20C

**\*\*\* Les 20ul contiennent 0,1% de BSA.**

For technical support and original validation data for this product please contact:  
T: 1 (888) 4PTGLAB (1-888-478-4522) (toll free in USA), or 1(312) 455-8498 (outside USA) E: [proteintech@ptglab.com](mailto:proteintech@ptglab.com) W: [ptglab.com](http://ptglab.com)

**This product is exclusively available under Proteintech Group brand and is not available to purchase from any other manufacturer.**

## Données de validation sélectionnées



1X10<sup>6</sup> HeLa cells were intracellularly stained with 0.4 ug CoraLite® Plus 488 Anti-Human TET2 (CL488-21207) (red), or 0.4 ug Control Antibody. Cells were fixed and permeabilized with Transcription Factor Staining Buffer Kit (PF00011).