

À des fins de recherche uniquement

Anticorps Polyclonal de lapin anti-ZO-1



Numéro de catalogue: **CL488-21773** **Phare**

Informations de base

Numéro de catalogue: CL488-21773	Numéro d'acquisition GenBank: BC111712	Méthode de purification: Purification par affinité contre l'antigène
Taille: 100ul , Concentration: 1000 µg/ml by Nanodrop;	Identification du gène (NCBI): 7082	Dilutions recommandées: IF 1:50-1:500
Hôte: Lapin	Nom complet: tight junction protein 1 (zona occludens 1)	Excitation/Emission maxima wavelengths: 493 nm / 522 nm
Isotype: IgG	MW calculé: 1748 aa, 195 kDa	
Immunogen Catalog Number: AG16454	MW observés: 230 kDa	

Applications

Applications testées: FC (Intra), IF	Contrôles positifs: IF : cellules MCF-7, cellules HUVEC
Spécificité de l'espèce: canin, Humain, rat, souris, Hamster	

Informations générales

Tight junction (or zonula occludens) form the continuous intercellular barrier between epithelial and endothelial cells, which is required to separate tissue spaces and regulate selective movement of solutes across the epithelium and endothelium (PMID: 20066090). ZO-1 (also known as TJP1) is a peripheral membrane phosphoprotein located on the cytoplasmic face and is expressed in tight junctions of both epithelial and endothelial cells (PMID: 3528172). It binds the transmembrane proteins occludin and the claudins linking them to cytoskeletal actin (PMID: 17418867). ZO-1 belongs to a family of multidomain proteins known as the membrane-associated guanylate kinase homologs (MAGUKs). It is a pivotal tight junction protein and may be involved in signalling mechanisms regulating cell proliferation and differentiation (PMID: 22782886).

Stockage

Stockage:
Stocker à -20 °C. Éviter toute exposition à la lumière. Stable pendant un an après l'expédition.
Tampon de stockage:
PBS avec glycérol à 50 %, Proclin300 à 0,05 % et BSA à 0,5 %, pH 7,3.
L'aliquotage n'est pas nécessaire pour le stockage à -20C

***** Les 20ul contiennent 0,1% de BSA.**

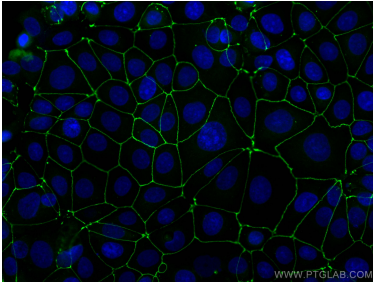
For technical support and original validation data for this product please contact:

T: 1 (888) 4PTGLAB (1-888-478-4522) (toll free in USA), or 1(312) 455-8498 (outside USA)

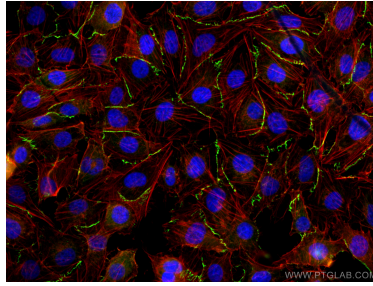
E: proteintech@ptglab.com
W: ptglab.com

This product is exclusively available under Proteintech Group brand and is not available to purchase from any other manufacturer.

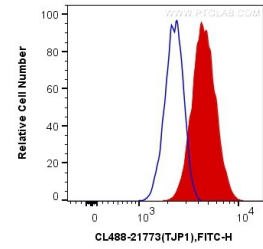
Données de validation sélectionnées



Immunofluorescent analysis of (-20°C Methanol) fixed MCF-7 cells using CoraLite® Plus 488 ZO-1 antibody (CL488-21773) at dilution of 1:200.



Immunofluorescent analysis of (4% PFA) fixed HUVEC cells using CoraLite® Plus 488 ZO-1 antibody (CL488-21773) at dilution of 1:200.



1×10^6 MCF-7 cells were intracellularly stained with 0.4 μ g CoraLite® Plus 488 Anti-Human ZO-1 (CL488-21773) (red), or 0.4 μ g Control Antibody. Cells were fixed with 4% PFA and permeabilized with Flow Cytometry Perm Buffer (PF00011-C).