

À des fins de recherche uniquement

Anticorps Polyclonal de lapin anti-ROCK1



Numéro de catalogue: **CL488-21850**

Phare

Informations de base

Numéro de catalogue: CL488-21850	Numéro d'acquisition GenBank: BC113114	Méthode de purification: Purification par affinité contre l'antigène
Taille: 100ul , Concentration: 1000 µg/ml by Nanodrop;	Identification du gène (NCBI): 6093	Dilutions recommandées: IF 1:50-1:500
Hôte: Lapin	Nom complet: Rho-associated, coiled-coil containing protein kinase 1	Excitation/Emission maxima wavelengths: 493 nm / 522 nm
Isotype: IgG	MW calculé: 1354 aa, 158 kDa	
Immunogen Catalog Number: AG16317	MW observés: 150-160 kDa	

Applications

Applications testées: FC (Intra), IF	Contrôles positifs: IF : cellules HeLa,
Spécificité de l'espèce: Humain, souris	

Informations générales

ROCK1, also named as p160ROCK and NY-REN-35, belongs to the protein kinase superfamily and AGC Ser/Thr protein kinase family. ROCK1 phosphorylates and activates DAPK3, which then regulates myosin light chain phosphatase through phosphorylation of MYPT1 thereby regulating the assembly of the actin cytoskeleton, cell migration, invasiveness of tumor cells, smooth muscle contraction and neurite outgrowth. ROCK1 is required for centromere positioning and centromere-dependent exit from mitosis. It is necessary for apoptotic membrane blebbing. ROCK1 catalyzes the reaction: ATP + a protein = ADP + a phosphoprotein.

Stockage

Stockage:
Stocker à -20 °C. Éviter toute exposition à la lumière.
Tampon de stockage:
PBS avec glycérol à 50 %, Proclin300 à 0,05 % et BSA à 0,5 %, pH 7,3.
L'aliquotage n'est pas nécessaire pour le stockage à -20C

***** Les 20ul contiennent 0,1% de BSA.**

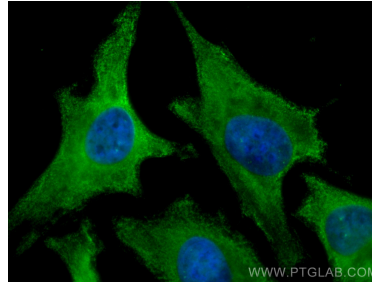
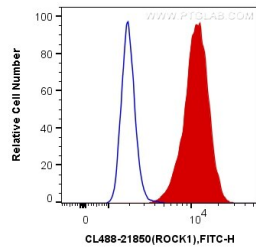
For technical support and original validation data for this product please contact:

T: 1 (888) 4PTGLAB (1-888-478-4522) (toll free in USA), or 1(312) 455-8498 (outside USA)

E: proteintech@ptglab.com
W: ptglab.com

This product is exclusively available under Proteintech Group brand and is not available to purchase from any other manufacturer.

Données de validation sélectionnées



1×10^6 HeLa cells were intracellularly stained with 0.4 ug CoraLite® Plus 488 Anti-Human ROCK1 (CL488-21850) (red), or 0.4 ug Control Antibody. Cells were fixed with 4% PFA and permeabilized with Flow Cytometry Perm Buffer (PF00011-C).

Immunofluorescent analysis of (-20°C Methanol) fixed HeLa cells using CoraLite® Plus 488 ROCK1 antibody (CL488-21850) at dilution of 1:200.