

À des fins de recherche uniquement

Anticorps Polyclonal de lapin anti-NFATC2



Numéro de catalogue: **CL488-22023** **Phare**

Informations de base

Numéro de catalogue: CL488-22023	Numéro d'acquisition GenBank: BC136418	Méthode de purification: Purification par affinité contre l'antigène
Taille: 100ul, Concentration: 1000 µg/ml by Nanodrop;	Identification du gène (NCBI): 4773	Dilutions recommandées: IF 1:50-1:500
Hôte: Lapin	Nom complet: nuclear factor of activated T-cells, cytoplasmic, calcineurin-dependent 2	Excitation/Emission maximum wavelengths: 493 nm / 522 nm
Isotype: IgG	MW calculé: 925 aa, 100 kDa	
Immunogen Catalog Number: AG16849	MW observés: 135 kDa	

Applications

Applications testées: FC (Intra), IF	Contrôles positifs: IF : cellules U-251,
Spécificité de l'espèce: Humain, souris	

Informations générales

Nuclear factor of activated T-cells, cytoplasmic 2 (NFATC2), also named NFAT1, or NFATP, is a 925 amino acid protein, which is expressed in thymus, spleen, heart, testis, brain, placenta, muscle and pancreas. Cytoplasmic for the phosphorylated form and nuclear after activation that is controlled by calcineurin-mediated dephosphorylation. Rapid nuclear exit of NFATC is thought to be one mechanism by which cells distinguish between sustained and transient calcium signals. The subcellular localization of NFATC plays a key role in the regulation of gene transcription. NFATC2 plays a role in the inducible expression of cytokine genes in T-cells, especially in the induction of the IL-2, IL-3, IL-4, TNF-alpha or GM-CSF. NFATC2 promotes invasive migration through the activation of GPC6 expression and WNT5A signaling pathway. The calculated molecular weight of NFATC2 is about 97-100 kDa, but the modified NFATC2 protein is about 135 kDa.

Stockage

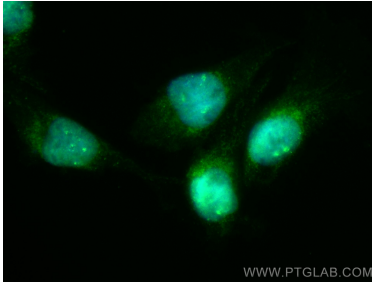
Stockage:
Stocker à -20 °C. Éviter toute exposition à la lumière.
Tampon de stockage:
PBS avec glycérol à 50 %, Proclin300 à 0,05 % et BSA à 0,5 %, pH 7,3.
L'aliquotage n'est pas nécessaire pour le stockage à -20C

***** Les 20ul contiennent 0,1% de BSA.**

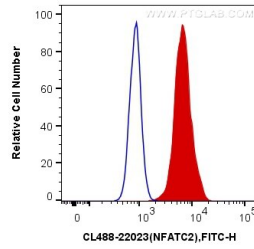
For technical support and original validation data for this product please contact:
T: 1 (888) 4PTGLAB (1-888-478-4522) (toll free in USA), or 1(312) 455-8498 (outside USA)
E: proteintech@ptglab.com
W: ptglab.com

This product is exclusively available under Proteintech Group brand and is not available to purchase from any other manufacturer.

Données de validation sélectionnées



Immunofluorescent analysis of (4% PFA) fixed U-251 cells using CoraLite® Plus 488 NFATC2 antibody (CL488-22023) at dilution of 1:200.



1X10⁶ Ramos cells were intracellularly stained with 0.4 ug CoraLite® Plus 488 Anti-Human NFATC2 (CL488-22023) (red), or 0.4 ug Control Antibody. Cells were fixed with 4% PFA and permeabilized with Flow Cytometry Perm Buffer (PF00011-C).