

À des fins de recherche uniquement

Anticorps Polyclonal de lapin anti-IL-22RA2



Numéro de catalogue: **CL488-22861**

Informations de base

Numéro de catalogue:	CL488-22861	Numéro d'acquisition GenBank:	BC125167	Méthode de purification:	Purification par affinité contre l'antigène
Taille:	100ul, Concentration: 1000 µg/ml by Nanodrop;	Identification du gène (NCBI):	116379	Excitation/Emission maxima wavelengths:	493 nm / 522 nm
Hôte:	Lapin	Nom complet:	interleukin 22 receptor, alpha 2		
Isotype:	IgG	MW calculé:	263 aa, 31 kDa		
Immunogen Catalog Number:	AG18854	MW observés:	27 kDa		

Applications

Applications testées:
FC (Intra)
Spécificité de l'espèce:
Humain

Informations générales

Interleukin-22 receptor subunit alpha-2 (IL22RA2, also known as CRF2-10) is a soluble member of the type II cytokine receptor family. Through binding to IL22, IL22RA2 prevents the interaction of IL22 with the functional IL22-R complex and blocks the activity of IL22 (in vitro). IL22RA2 may play an important role as an IL22 antagonist in the regulation of inflammatory responses. It has been described that human IL22RA2 gene encodes three alternatively spliced isoforms called CRF2-10L, CRF2-10, and CRF2-10s, with molecular weights of 31 kDa, 27 kDa, and 15 kDa, respectively.

Stockage

Stockage:
Stocker à -20 °C. Éviter toute exposition à la lumière. Stable pendant un an après l'expédition.
Tampon de stockage:
PBS avec glycérol à 50 %, Proclin300 à 0,05 % et BSA à 0,5 %, pH 7,3.
L'aliquotage n'est pas nécessaire pour le stockage à -20C

***** Les 20ul contiennent 0,1% de BSA.**

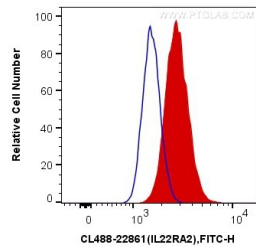
For technical support and original validation data for this product please contact:

T: 1 (888) 4PTGLAB (1-888-478-4522) (toll free in USA), or 1(312) 455-8498 (outside USA)

E: proteintech@ptglab.com
W: ptglab.com

This product is exclusively available under Proteintech Group brand and is not available to purchase from any other manufacturer.

Données de validation sélectionnées



1X10⁶ HeLa cells were intracellularly stained with 0.4 ug Coralite® Plus 488 Anti-Human IL-22RA2 (CL488-22861) (red), or 0.4 ug Control Antibody. Cells were fixed with 4% PFA and permeabilized with Flow Cytometry Perm Buffer (PF00011-C).