

À des fins de recherche uniquement

Anticorps Polyclonal de lapin anti-GFAP



Numéro de catalogue: **CL488-23935** **Phare**

Informations de base

Numéro de catalogue: CL488-23935	Numéro d'acquisition GenBank: BC013596	Méthode de purification: Purification par affinité contre l'antigène
Taille: 100ul, Concentration: 1000 µg/ml by Nanodrop;	Identification du gène (NCBI): 2670	Dilutions recommandées: IF 1:300-1:1200
Hôte: Lapin	Nom complet: glial fibrillary acidic protein	Excitation/Emission maximum wavelengths: 493 nm / 522 nm
Isotype: IgG	MW calculé: 432 aa, 50 kDa	
Immunogen Catalog Number: AG20853	MW observés: 45-50 kDa	

Applications

Applications testées: IF	Contrôles positifs: IF : tissu cérébral de rat,
Spécificité de l'espèce: Humain, rat, souris	

Informations générales

GFAP (Glial fibrillary acidic protein) is a type III intermediate filament (IF) protein specific to the central nervous system (CNS). GFAP is one of the main components of the intermediate filament network in astrocytes and has been proposed as playing a role in cell migration, cell motility, maintaining mechanical strength, and in mitosis. GFAP is expressed in central nervous system cells, predominantly in astrocytes. GFAP is commonly used as an astrocyte marker. However, GFAP is also present in peripheral glia and in non-CNS cells, including fibroblasts, chondrocytes, lymphocytes, and liver stellate cells (PMID: 21219963).

Stockage

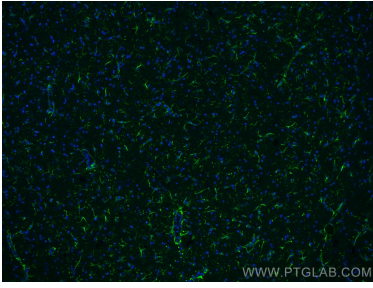
Stockage:
Stocker à -20 °C. Éviter toute exposition à la lumière.
Tampon de stockage:
PBS avec glycérol à 50 %, Proclin300 à 0,05 % et BSA à 0,5 %, pH 7,3.
L'aliquotage n'est pas nécessaire pour le stockage à -20C

***** Les 20ul contiennent 0,1% de BSA.**

For technical support and original validation data for this product please contact:
T: 1 (888) 4PTGLAB (1-888-478-4522) (toll free in USA), or 1(312) 455-8498 (outside USA) E: proteintech@ptglab.com W: ptglab.com

This product is exclusively available under Proteintech Group brand and is not available to purchase from any other manufacturer.

Données de validation sélectionnées



Immunofluorescent analysis of (4% PFA) fixed rat brain tissue using CoraLite® Plus 488 GFAP antibody (CL488-23935) at dilution of 1:600.