

À des fins de recherche uniquement

Anticorps Polyclonal de lapin anti-RELB



Numéro de catalogue: **CL488-25027**

Informations de base

Numéro de catalogue: CL488-25027	Numéro d'acquisition GenBank: BC028013	Méthode de purification: Purification par affinité contre l'antigène
Taille: 100ul , Concentration: 1000 µg/ml by Nanodrop;	Identification du gène (NCBI): 5971	Dilutions recommandées: IF 1:50-1:500
Hôte: Lapin	Nom complet: v-rel reticuloendotheliosis viral oncogene homolog B	Excitation/Emission maximale wavelengths: 493 nm / 522 nm
Isotype: IgG	MW calculé: 62 kDa	
Immunogen Catalog Number: AG13824	MW observés: 62-65 kDa	

Applications

Applications testées: FC (Intra), IF	Contrôles positifs: IF : cellules HeLa,
Spécificité de l'espèce: Humain	

Informations générales

RELB, also named as Transcription factor RelB, is a 579 amino acid protein, which contains one RHD domain. RELB localizes in the nucleus and cytoplasm. RELB is a pleiotropic transcription factor which is present in almost all cell types and is involved in many biological processes such as inflammation, immunity, differentiation, cell growth, tumorigenesis and apoptosis.

Stockage

Stockage:
Stocker à -20 °C. Éviter toute exposition à la lumière.
Tampon de stockage:
PBS avec glycérol à 50 %, Proclin300 à 0,05 % et BSA à 0,5 %, pH 7,3.
L'aliquotage n'est pas nécessaire pour le stockage à -20C

***** Les 20ul contiennent 0,1% de BSA.**

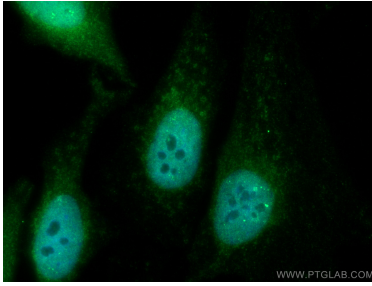
For technical support and original validation data for this product please contact:

T: 1 (888) 4PTGLAB (1-888-478-4522) (toll free in USA), or 1(312) 455-8498 (outside USA)

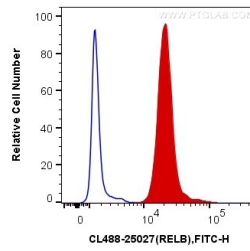
E: proteintech@ptglab.com
W: ptglab.com

This product is exclusively available under Proteintech Group brand and is not available to purchase from any other manufacturer.

Données de validation sélectionnées



Immunofluorescent analysis of (4% PFA) fixed HeLa cells using CoraLite® Plus 488 RELB antibody (CL488-25027) at dilution of 1:200.



1X10⁶ Jurkat cells were intracellularly stained with 0.2 ug CoraLite® Plus 488 Anti-Human RELB (CL488-25027) (red), or 0.2 ug Mouse IgG1 Isotype Control (CL488-66360, Clone: T1F8D3F10) (blue). Cells were fixed and permeabilized with Transcription Factor Staining Buffer Kit (PF00011).