

À des fins de recherche uniquement

Anticorps Polyclonal de lapin anti-CD68



Numéro de catalogue: **CL488-25747**

Informations de base

Numéro de catalogue: CL488-25747	Numéro d'acquisition GenBank: BC015557	Méthode de purification: Purification par affinité contre l'antigène
Taille: 100ul , Concentration: 1000 µg/ml by Nanodrop;	Identification du gène (NCBI): 968	Dilutions recommandées: IF 1:50-1:500
Hôte: Lapin	Nom complet: CD68 molécule	Excitation/Emission maxima wavelengths: 493 nm / 522 nm
Isotype: IgG	MW calculé 37 kDa	
Immunogen Catalog Number: AG22815	MW observés: 60 kDa	

Applications

Applications testées: FC (Intra), IF	Contrôles positifs: IF : tissu d'amygdalite humain,
Spécificité de l'espèce: Humain, souris	

Informations générales

CD68 is a type I transmembrane glycoprotein that is highly expressed by human monocytes and tissue macrophages. It belongs to the lysosomal/endosomal-associated membrane glycoprotein (LAMP) family and primarily localizes to lysosomes and endosomes with a smaller fraction circulating to the cell surface. CD68 is also a member of the scavenger receptor family. It may play a role in phagocytic activities of tissue macrophages. The apparent molecular weight of CD68 is larger than calculated molecular weight due to post-translation modification.

Stockage

Stockage:
Stocker à -20 °C. Éviter toute exposition à la lumière.
Tampon de stockage:
PBS avec glycérol à 50 %, Proclin300 à 0,05 % et BSA à 0,5 %, pH 7,3.
L'aliquotage n'est pas nécessaire pour le stockage à -20C

***** Les 20ul contiennent 0,1% de BSA.**

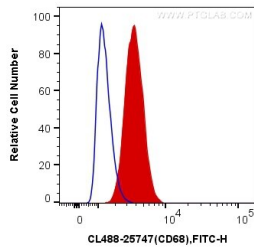
For technical support and original validation data for this product please contact:

T: 1 (888) 4PTGLAB (1-888-478-4522) (toll free in USA), or 1(312) 455-8498 (outside USA)

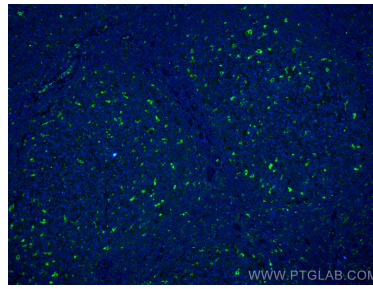
E: proteintech@ptglab.com
W: ptglab.com

This product is exclusively available under Proteintech Group brand and is not available to purchase from any other manufacturer.

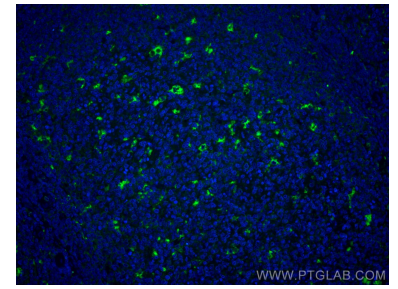
Données de validation sélectionnées



1X10⁶ RAW 264.7 cells were intracellularly stained with 0.5 ug CoraLite® Plus 488 Anti-Human CD68 (CL488-25747) (red), or 0.5 ug Control Antibody (blue). Cells were fixed with 4% PFA and permeabilized with 0.1% TritonX-100.



Immunofluorescent analysis of (4% PFA) fixed human tonsillitis tissue using CoraLite® Plus 488 CD68 antibody (CL488-25747) at dilution of 1:200.



Immunofluorescent analysis of (4% PFA) fixed human tonsillitis tissue using CoraLite® Plus 488 CD68 antibody (CL488-25747) at dilution of 1:200.