

À des fins de recherche uniquement

Anticorps Polyclonal de lapin anti-pan-keratin



Numéro de catalogue: **CL488-26411**

Informations de base

Numéro de catalogue: CL488-26411	Numéro d'acquisition GenBank: BC024292	Méthode de purification: Purification par affinité contre l'antigène
Taille: 100ul , Concentration: 1000 µg/ml by Nanodrop;	Identification du gène (NCBI): 3852	Dilutions recommandées: IF 1:50-1:500
Hôte: Lapin	Nom complet: keratin 5	Excitation/Emission maxima wavelengths: 493 nm / 522 nm
Isotype: IgG	MW calculé 590 aa, 62 kDa	
Immunogen Catalog Number: AG24184		

Applications

Applications testées: FC (Intra), IF	Contrôles positifs: IF : cellules HeLa, tissu de cancer du côlon humain, tissu de cancer du poumon humain
Spécificité de l'espèce: Humain	

Informations générales

Keratins are a large family of proteins that form the intermediate filament cytoskeleton of epithelial cells, which are classified into two major sequence types. Type I keratins are a group of acidic intermediate filament proteins, including K9-K23, and the hair keratins Ha1-Ha8. Type II keratins are the basic or neutral counterparts to the acidic type I keratins, including K1-K8, and the hair keratins, Hb1-Hb6. Keratin isoforms demonstrate tissue- and differentiation-specific profiles that make them useful as research biomarkers. Research studies have shown that mutations in keratin genes are associated with skin disorders, liver and pancreatic diseases, and inflammatory intestinal diseases. This antibody is a pan-keratin antibody.

Stockage

Stockage:
Stocker à -20 °C. Éviter toute exposition à la lumière. Stable pendant un an après l'expédition.
Tampon de stockage:
PBS avec glycérol à 50 %, Proclin300 à 0,05 % et BSA à 0,5 %, pH 7,3.
L'aliquotage n'est pas nécessaire pour le stockage à -20C

***** Les 20ul contiennent 0,1% de BSA.**

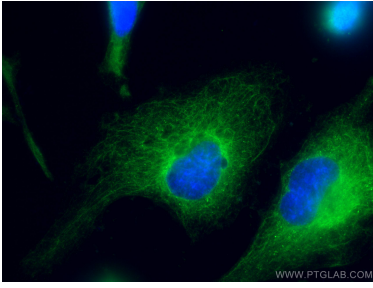
For technical support and original validation data for this product please contact:

T: 1 (888) 4PTGLAB (1-888-478-4522) (toll free in USA), or 1(312) 455-8498 (outside USA)

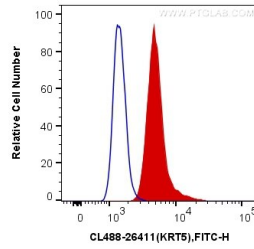
E: proteintech@ptglab.com
W: ptglab.com

This product is exclusively available under Proteintech Group brand and is not available to purchase from any other manufacturer.

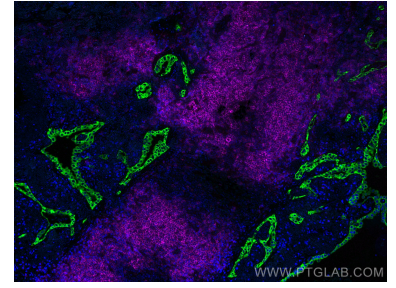
Données de validation sélectionnées



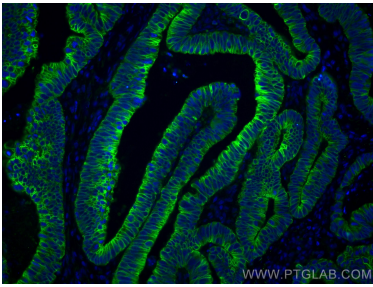
Immunofluorescent analysis of (4% PFA) fixed HeLa cells using CoraLite® Plus 488 pan-keratin antibody (CL488-26411) at dilution of 1:100.



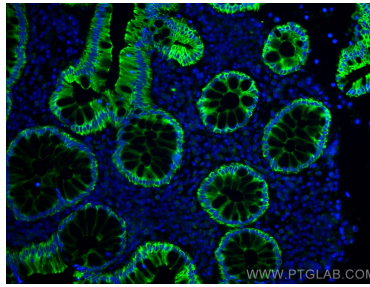
1×10^6 A431 cells were intracellularly stained with 0.2 ug CoraLite® Plus 488 Anti-Human pan-keratin (CL488-26411) (red), or 0.2 ug Control Antibody. Cells were fixed with 4% PFA and permeabilized with Flow Cytometry Perm Buffer (PF00011-C).



Immunofluorescent analysis of (4% PFA) fixed human lung cancer tissue using CoraLite® Plus 488 pan-keratin antibody (CL488-26411) at dilution of 1:200, CoraLite® Plus 647 CD20 antibody (CL647-60271, Clone: 4A7G3, Magenta).



Immunofluorescent analysis of (4% PFA) fixed human colon cancer tissue using CoraLite® Plus 488 pan-keratin antibody (CL488-26411) at dilution of 1:100.



Immunofluorescent analysis of (4% PFA) fixed human colon cancer tissue using CoraLite® Plus 488 pan-keratin antibody (CL488-26411) at dilution of 1:100.