

À des fins de recherche uniquement

Anticorps Polyclonal de lapin anti-KI67



Numéro de catalogue: **CL488-27309** **Phare**

Informations de base

Numéro de catalogue: CL488-27309	Numéro d'acquisition GenBank: NM_002417	Méthode de purification: Purification par affinité contre l'antigène
Taille: 100ul , Concentration: 1000 µg/ml by Nanodrop;	Identification du gène (NCBI): 4288	Dilutions recommandées: IF 1:50-1:500
Hôte: Lapin	Nom complet: antigen identified by monoclonal antibody Ki-67	Excitation/Emission maximum wavelengths: 493 nm / 522 nm
Isotype: IgG	MW calculé 359 kDa	
Immunogen Catalog Number: AG26266		

Applications

Applications testées: FC (Intra), IF	Contrôles positifs: IF : cellules HeLa,
Spécificité de l'espèce: Humain	

Informations générales

The Ki-67 protein (also known as MKI67) is a cellular marker for proliferation. Ki67 is present during all active phases of the cell cycle (G1, S, G2 and M), but is absent in resting cells (G0). Cellular content of Ki-67 protein markedly increases during cell progression through S phase of the cell cycle. Therefore, the nuclear expression of Ki67 can be evaluated to assess tumor proliferation by immunohistochemistry. It has been demonstrated to be of prognostic value in breast cancer. In head and neck cancer, several studies have reported an association between high proliferative activity and poorer prognosis.

Stockage

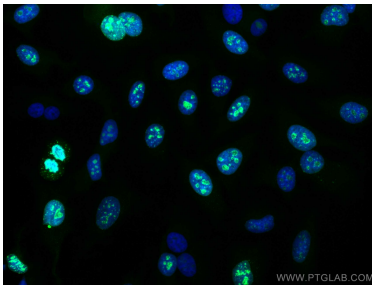
Stockage:
Stocker à -20 °C. Éviter toute exposition à la lumière. Stable pendant un an après l'expédition.
Tampon de stockage:
PBS avec glycérol à 50 %, Proclin300 à 0,05 % et BSA à 0,5 %, pH 7,3.
L'aliquotage n'est pas nécessaire pour le stockage à -20C

***** Les 20ul contiennent 0,1% de BSA.**

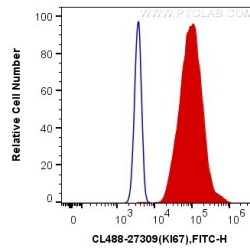
For technical support and original validation data for this product please contact:
T: 1 (888) 4PTGLAB (1-888-478-4522) (toll free in USA), or 1(312) 455-8498 (outside USA) E: proteintech@ptglab.com W: ptglab.com

This product is exclusively available under Proteintech Group brand and is not available to purchase from any other manufacturer.

Données de validation sélectionnées



Immunofluorescent analysis of (4% PFA) fixed HeLa cells using CoraLite® Plus 488 KI67 antibody (CL488-27309) at dilution of 1:200.



1×10^6 HeLa cells were intracellularly stained with 0.4 ug CoraLite® Plus 488 Anti-Human KI67 (CL488-27309) (red), or 0.4 ug Control Antibody. Cells were fixed and permeabilized with Transcription Factor Staining Buffer Kit (PF00011).