

À des fins de recherche uniquement

# Anticorps Polyclonal de lapin anti-Beta Catenin



Numéro de catalogue: CL488-51067

Phare

1 Publications

## Informations de base

Numéro de catalogue:

CL488-51067

Numéro d'acquisition GenBank:

BC058926

Méthode de purification:

Purification par affinité contre l'antigène

Taille:

100ul, Concentration: 1000 µg/ml by Nanodrop;

Identification du gène (NCBI):

1499

Dilutions recommandées:

IF 1:50-1:500

Hôte:

Lapin

Nom complet:

catenin (cadherin-associated protein), beta 1, 88kDa

Excitation/Emission maxima wavelengths:

493 nm / 522 nm

Isotype:

IgG

MW calculé

781 aa, 86 kDa

MW observés:

92 kDa

## Applications

Applications testées:

IF

Contrôles positifs:

IF : cellules MCF-7,

Spécificité de l'espèce:

Humain, porc, rat, souris

## Informations générales

$\beta$ -Catenin, also known as CTNNB1, is an evolutionarily conserved, multifunctional intracellular protein.  $\beta$ -Catenin is a 92-kDa protein, originally identified in cell adherens junctions (AJs) where it functions to bridge the cytoplasmic domain of cadherins to  $\alpha$ -catenin and the actin cytoskeleton. Besides its essential role in the AJs,  $\beta$ -catenin is also a key downstream component of the canonical Wnt pathway that plays diverse and critical roles in embryonic development and adult tissue homeostasis. The Wnt/ $\beta$ -catenin pathway is also involved in the activation of other intracellular messengers such as calcium fluxes, JNK, and SRC kinases. Deregulation of  $\beta$ -catenin activity is associated with multiple diseases including cancers. (PMID: 22617422; 18334222)

## Stockage

Stockage:

Stocker à -20 °C. Éviter toute exposition à la lumière.

Tampon de stockage:

PBS avec glycérol à 50 %, Proclin300 à 0,05 % et BSA à 0,5 %, pH 7,3.

L'aliquotage n'est pas nécessaire pour le stockage à -20C

\*\*\* Les 20ul contiennent 0,1% de BSA.

For technical support and original validation data for this product please contact:

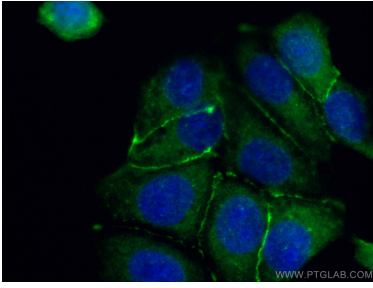
T: 1 (888) 4PTGLAB (1-888-478-4522) (toll free in USA), or 1(312) 455-8498 (outside USA)

E: [proteintech@ptglab.com](mailto:proteintech@ptglab.com)  
W: [ptglab.com](http://ptglab.com)

This product is exclusively available under Proteintech Group brand and is not available to purchase from any other manufacturer.

---

## Données de validation sélectionnées



Immunofluorescent analysis of (-20°C Ethanol) fixed MCF-7 cells using CoraLite® Plus 488 Beta Catenin antibody (CL488-51067) at dilution of 1:100.