

À des fins de recherche uniquement

Anticorps Monoclonal anti-EMILIN1

Numéro de catalogue: **CL488-60047**



Informations de base

Numéro de catalogue: CL488-60047	Numéro d'acquisition GenBank: BC007530	Méthode de purification: Purification par protéine G
Taille: 100ul , Concentration: 1000 µg/ml by Nanodrop;	Identification du gène (NCBI): 11117	CloneNo.: 2A5C8
Hôte: Mouse	Nom complet: elastin microfibril interfacier 1	Dilutions recommandées: IF 1:50-1:500
Isotype: IgG1	MW calculé 107 kDa	Excitation/Emission maxima wavelengths: 493 nm / 522 nm
Immunogen Catalog Number: AG1016	MW observés: 120-130 kDa	

Applications

Applications testées: IF	Contrôles positifs: IF : tissu de tumeur ovarienne humain,
Spécificité de l'espèce: Humain	

Informations générales

EMILIN1, also named as EMILIN, EMILIN-1, gp115 and EMI, may be responsible for anchoring smooth muscle cells to elastic fibers, and may be involved not only in the formation of the elastic fiber, but also in the processes that regulate vessel assembly. It has cell adhesive capacity. EMILIN1 is a negative regulator of the transforming growth factor-beta (TGF-beta) signaling, which is involved in blood pressure (BP) homeostasis (PMID:20186130). EMILIN1 may play a key role in hypertensive vascular remodeling. TGFβ proteins are the main regulators of blood vessel development and maintenance, and EMILIN1 inhibits TGFβ signaling by binding specifically to the proTGFβ precursor and preventing its maturation by furin convertases in the extracellular space (PMID:19922630).

Stockage

Stockage:
Stocker à -20 °C. Éviter toute exposition à la lumière.
Tampon de stockage:
PBS avec glycérol à 50 %, Proclin300 à 0,05 % et BSA à 0,5 %, pH 7,3.
L'aliquotage n'est pas nécessaire pour le stockage à -20C

***** Les 20ul contiennent 0,1% de BSA.**

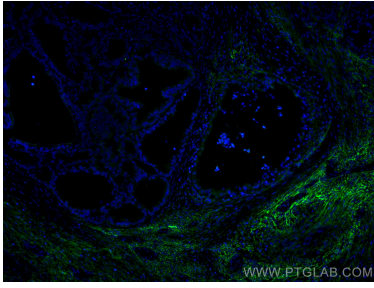
For technical support and original validation data for this product please contact:

T: 1 (888) 4PTGLAB (1-888-478-4522) (toll free
in USA), or 1(312) 455-8498 (outside USA)

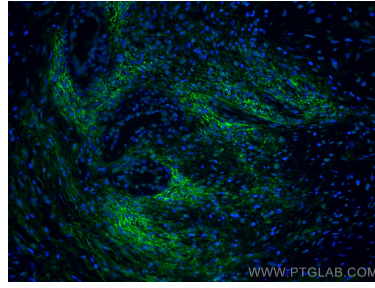
E: proteintech@ptglab.com
W: ptglab.com

This product is exclusively available under Proteintech Group brand and is not available to purchase from any other manufacturer.

Données de validation sélectionnées



Immunofluorescent analysis of (4% PFA) fixed human ovary tumor tissue using CoraLite® Plus 488 EMILIN1 antibody (CL488-60047, Clone: 2A5C8) at dilution of 1:200.



Immunofluorescent analysis of (4% PFA) fixed human ovary tumor tissue using CoraLite® Plus 488 EMILIN1 antibody (CL488-60047, Clone: 2A5C8) at dilution of 1:200.