

À des fins de recherche uniquement

Anticorps Monoclonal anti-EEF1D

Numéro de catalogue: CL488-60085



Informations de base

Numéro de catalogue: CL488-60085	Numéro d'acquisition GenBank: BC007847	Méthode de purification: Purification par protéine G
Taille: 100ul , Concentration: 1000 µg/ml by Nanodrop;	Identification du gène (NCBI): 1936	CloneNo.: 3B1B11
Hôte: Mouse	Nom complet: eukaryotic translation elongation factor 1 delta (guanine nucleotide exchange protein)	Dilutions recommandées: IF 1:50-1:500
Isotype: IgG1	MW calculé 31 kDa	Excitation/Emission maxima wavelengths: 493 nm / 522 nm
Immunogen Catalog Number: AG0983	MW observés: 35-40 kDa	

Applications

Applications testées: FC (Intra), IF	Contrôles positifs: IF : cellules HepG2, cellules HeLa
Spécificité de l'espèce: Humain, rat, souris	

Informations générales

EEF1D, also named as EF1D and EF 1 delta, belongs to the EF-1-beta/EF-1-delta family. It is a subunit of the elongation factor-1 complex, which is responsible for the enzymatic delivery of aminoacyl tRNAs to the ribosome. EF-1-beta and EF-1-delta stimulate the exchange of GDP bound to EF-1-alpha to GTP. EEF1D is phosphorylated upon DNA damage, probably by ATM or ATR. The calculated molecular weight of EEF1D is a 31 kDa, but the modified protein is about 35-40 kDa. (PMID: 21936567)

Stockage

Stockage:
Stocker à -20 °C. Éviter toute exposition à la lumière. Stable pendant un an après l'expédition.
Tampon de stockage:
PBS avec glycérol à 50 %, Proclin300 à 0,05 % et BSA à 0,5 %, pH 7,3.
L'aliquotage n'est pas nécessaire pour le stockage à -20C

***** Les 20ul contiennent 0,1% de BSA.**

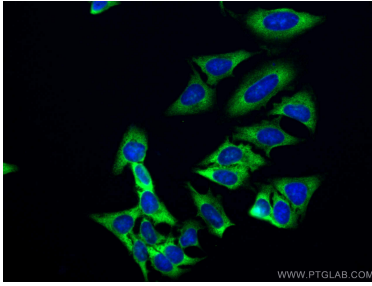
For technical support and original validation data for this product please contact:

T: 1 (888) 4PTGLAB (1-888-478-4522) (toll free
in USA), or 1(312) 455-8498 (outside USA)

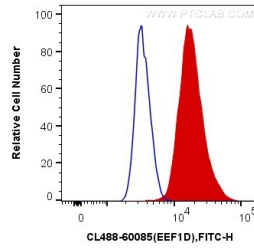
E: proteintech@ptglab.com
W: ptglab.com

This product is exclusively available under Proteintech Group brand and is not available to purchase from any other manufacturer.

Données de validation sélectionnées



Immunofluorescent analysis of (-20°C Ethanol) fixed HepG2 cells using the CoraLite® Plus 488-conjugated version of this antibody, CL488-60085 (EEF1D antibody), at dilution of 1:100.



1X10⁶ MCF-7 cells were intracellularly stained with 0.4 ug CoraLite® Plus 488 Anti-Human EEF1D (CL488-60085, Clone:3B1B11) (red), or 0.4 ug Mouse IgG1 Isotype Control (CL488-66360, Clone: T1F8D3F10) (blue). Cells were fixed with 4% PFA and permeabilized with Flow Cytometry Perm Buffer (PF00011-C).