

À des fins de recherche uniquement

Anticorps Monoclonal anti-CD206

Numéro de catalogue: CL488-60143

4 Publications



Informations de base

Numéro de catalogue: CL488-60143	Numéro d'acquisition GenBank: NM_002438	Méthode de purification: Purification par protéine A
Taille: 100ul , Concentration: 1000 µg/ml by Nanodrop;	Identification du gène (NCBI): 4360	CloneNo.: 2A6A10
Hôte: Mouse	Nom complet: mannose receptor, C type 1	Dilutions recommandées: IF 1:50-1:500
Isotype: IgG2a	MW calculé: 166 kDa	Excitation/Emission maxima wavelengths: 493 nm / 522 nm

Applications

Applications testées: IF	Contrôles positifs: IF : tissu de cancer du poumon humain,
Demandes citées: IF	
Spécificité de l'espèce: Humain	
Espèces citées: Humain	

Informations générales

CD206, also named as MMR, CLEC13D and MRC1, is a type I membrane receptor that mediates the endocytosis of glycoproteins by macrophages. CD206 has been shown to bind high-mannose structures on the surface of potentially pathogenic viruses, bacteria, and fungi so that they can be neutralized by phagocytic engulfment. CD206 is a 170 kDa transmembrane protein which contains 5 domains: an amino-terminal cysteine-rich region, a fibronectin type II repeat, a series of eight tandem lectin-like carbohydrate recognition domains (responsible for the recognition of mannose and fucose), a transmembrane domain, and an intracellular carboxy-terminal tail. It is expressed on most tissue macrophages, in vitro derived dendritic cells, lymphatic and sinusoidal endothelia. This antibody is conjugated with CL488, Ex/Em 488 nm/515 nm.

Publications notables

Autrice	Pubmed ID	Journal	Application
Jia-Bin Wang	35999359	Cancer Gene Ther	IF
Dongsheng Guan	37431183	Acta Biochim Biophys Sin (Shanghai)	IF
Yang Liu	37267693	Phytomedicine	IF

Stockage

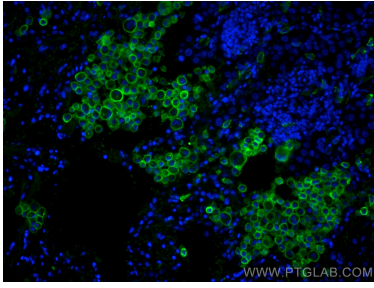
Stockage:
Stocker à -20 °C. Éviter toute exposition à la lumière. Stable pendant un an après l'expédition.
Tampon de stockage:
PBS avec glycérol à 50 %, Proclin300 à 0,05 % et BSA à 0,5 %, pH 7,3.
L'aliquotage n'est pas nécessaire pour le stockage à -20C

*** Les 20ul contiennent 0,1% de BSA.

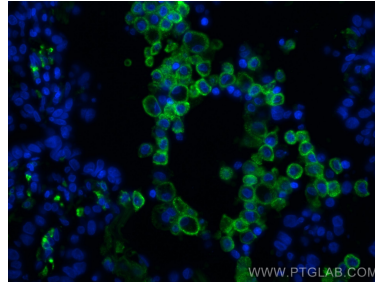
For technical support and original validation data for this product please contact:
T: 1 (888) 4PTGLAB (1-888-478-4522) (toll free in USA), or 1(312) 455-8498 (outside USA)
E: proteintech@ptglab.com
W: ptglab.com

This product is exclusively available under Proteintech Group brand and is not available to purchase from any other manufacturer.

Données de validation sélectionnées



Immunofluorescent analysis of (4% PFA) fixed human lung cancer tissue using CoraLite® Plus 488 CD206 antibody (CL488-60143, Clone: 2A6A10) at dilution of 1:200.



Immunofluorescent analysis of (4% PFA) fixed human lung cancer tissue using CoraLite® Plus 488 CD206 antibody (CL488-60143, Clone: 2A6A10) at dilution of 1:200.