

À des fins de recherche uniquement

# Anticorps Monoclonal anti-PAX8

Numéro de catalogue: CL488-60145



## Informations de base

<b>Numéro de catalogue:</b> CL488-60145	<b>Numéro d'acquisition GenBank:</b> BC001060	<b>Méthode de purification:</b> Purification par protéine A
<b>Taille:</b> 100ul , Concentration: 1000 µg/ml by Nanodrop;	<b>Identification du gène (NCBI):</b> 7849	<b>CloneNo.:</b> 4H7B3
<b>Hôte:</b> Mouse	<b>Nom complet:</b> paired box 8	<b>Dilutions recommandées:</b> IF 1:50-1:500
<b>Isotype:</b> IgG2b	<b>MW calculé</b> 48 kDa	<b>Excitation/Emission maxima wavelengths:</b> 493 nm / 522 nm
<b>Immunogen Catalog Number:</b> AG0306		

## Applications

<b>Applications testées:</b> IF	<b>Contrôles positifs:</b> IF : cellules SKOV-3, tissu de tumeur ovarienne humain, tissu rénal de souris
<b>Spécificité de l'espèce:</b> Humain, souris	

## Informations générales

PAX8 is a member of the paired box (PAX) family of transcription factors, typically containing a paired box domain and a paired-type homeodomain. It is expressed during organogenesis of the thyroid gland, kidney and Mullerian system. It is thought to regulate the expression of Wilms tumor suppressor (WT1) gene and mutations in PAX8 have been associated with Wilms tumor cells, thyroid and ovarian carcinomas. PAX8 is a useful marker in distinguishing ovarian carcinomas from mammary carcinomas (PMID: 18724243). PAX8 is expressed in a high percentage of ovarian serous, endometrioid, and clear cell carcinomas, but only rarely in primary ovarian mucinous adenocarcinomas.

PAX8 has 5 isoforms with calculated MW 31kd, 34kd, 41kd, 43kd and 48kd. And there is a 60kd band corresponding to the electrophoretic mobility of PAX8 (PMID:15650356).

## Stockage

**Stockage:**  
Stocker à -20 °C. Éviter toute exposition à la lumière. Stable pendant un an après l'expédition.  
**Tampon de stockage:**  
PBS avec glycérol à 50 %, Proclin300 à 0,05 % et BSA à 0,5 %, pH 7,3.  
L'aliquotage n'est pas nécessaire pour le stockage à -20C

**\*\*\* Les 20ul contiennent 0,1% de BSA.**

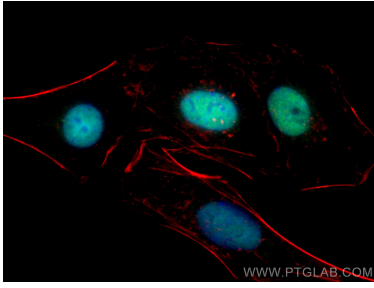
For technical support and original validation data for this product please contact:

T: 1 (888) 4PTGLAB (1-888-478-4522) (toll free  
in USA), or 1(312) 455-8498 (outside USA)

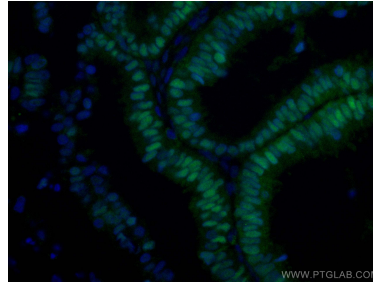
E: [proteintech@ptglab.com](mailto:proteintech@ptglab.com)  
W: [ptglab.com](http://ptglab.com)

**This product is exclusively available under Proteintech Group brand and is not available to purchase from any other manufacturer.**

## Données de validation sélectionnées



Immunofluorescent analysis of (4% PFA) fixed SKOV-3 cells using CoraLite® Plus 488 PAX8 antibody (CL488-60145, Clone: 4H7B3) at dilution of 1:800, CL594-Phalloidin (red).



Immunofluorescent analysis of (4% PFA) fixed human ovary tumor tissue using CoraLite® Plus 488 PAX8 antibody (CL488-60145, Clone: 4H7B3) at dilution of 1:100.