

À des fins de recherche uniquement

Anticorps Monoclonal anti-CKM-Specific



Numéro de catalogue: **CL488-60177**

Informations de base

Numéro de catalogue: CL488-60177	Numéro d'acquisition GenBank: BC007462	Méthode de purification: Purification par protéine A
Taille: 100ul , Concentration: 1000 µg/ml by Nanodrop;	Identification du gène (NCBI): 1158	CloneNo.: 2G3F6
Hôte: Mouse	Nom complet: creatine kinase, muscle	Dilutions recommandées: IF 1:50-1:500
Isotype: IgG2a	MW calculé 43 kDa	Excitation/Emission maxima wavelengths: 493 nm / 522 nm
	MW observés: 43 kDa	

Applications

Applications testées: IF	Contrôles positifs: IF : cellules C2C12,
Spécificité de l'espèce: Humain, rat, souris	

Informations générales

CKM, also named as CKMM and M-CK, is a member of the ATP:guanido phosphotransferase protein family. It is a cytoplasmic enzyme involved in energy homeostasis and is an important serum marker for myocardial infarction. CKM reversibly catalyzes the transfer of phosphate between ATP and various phosphogens such as creatine phosphate. It acts as a homodimer in striated muscle as well as in other tissues, and as a heterodimer with a similar brain isozyme in heart. CK isoenzymes play a central role in energy transduction in tissues with large, fluctuating energy demands, such as skeletal muscle, heart, brain and spermatozoa. CK MB consists of a dimer of nonidentical chains. With MM being the major form in skeletal muscle and myocardium, MB existing in myocardium, and BB existing in many tissues, especially brain.

Stockage

Stockage:
Stocker à -20 °C. Éviter toute exposition à la lumière. Stable pendant un an après l'expédition.
Tampon de stockage:
PBS avec glycérol à 50 %, Proclin300 à 0,05 % et BSA à 0,5 %, pH 7,3.
L'aliquotage n'est pas nécessaire pour le stockage à -20C

***** Les 20ul contiennent 0,1% de BSA.**

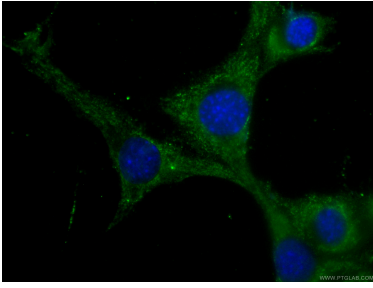
For technical support and original validation data for this product please contact:

T: 1 (888) 4PTGLAB (1-888-478-4522) (toll free
in USA), or 1(312) 455-8498 (outside USA)

E: proteintech@ptglab.com
W: ptglab.com

This product is exclusively available under Proteintech Group brand and is not available to purchase from any other manufacturer.

Données de validation sélectionnées



Immunofluorescent analysis of (-20°C Ethanol) fixed C2C12 cells using CL488-60177 (CKM-Specific antibody) at dilution of 1:100.