

À des fins de recherche uniquement

Anticorps Monoclonal anti-CD3

Numéro de catalogue: **CL488-60181**



Informations de base

Numéro de catalogue: CL488-60181	Numéro d'acquisition GenBank: BC049847	Méthode de purification: Purification par protéine A
Taille: 100ul , Concentration: 2000 µg/ml by Nanodrop;	Identification du gène (NCBI): 916	CloneNo.: 3F3A1
Hôte: Mouse	Nom complet: CD3e molecule, epsilon (CD3-TCR complex)	Dilutions recommandées: IF 1:50-1:500
Isotype: IgG2b	MW calculé 207 aa, 23 kDa	Excitation/Emission maxima wavelengths: 493 nm / 522 nm
Immunogen Catalog Number: AG11797		

Applications

Applications testées: IF	Contrôles positifs: IF : tissu de cancer du poumon humain, tissu d'amygdalite humain
Spécificité de l'espèce: Humain	

Informations générales

CD3 is a complex of proteins that directly associates with the T cell receptor (TCR). The TCR/CD3 complex of T-lymphocytes consists of either a TCR alpha/beta or TCR gamma/delta heterodimer coexpressed at the cell surface with the invariant subunits of CD3 labeled gamma, delta, epsilon, zeta, and eta. The TCR recognizes antigens bound to major histocompatibility complex (MHC) molecules. TCR-mediated peptide-MHC recognition is transmitted to the CD3 complex, leading to the intracellular signal transduction. CD3 is considered to be a pan-T cell marker for detection of normal and neoplastic T cells. This anti-CD3 is a monoclonal antibody directed against the epsilon chain of human CD3 molecule. And the antibody is conjugated with CL488, Ex/Em 488 nm/515 nm.

Stockage

Stockage:
Stocker à -20 °C. Éviter toute exposition à la lumière. Stable pendant un an après l'expédition.
Tampon de stockage:
PBS avec glycérol à 50 %, Proclin300 à 0,05 % et BSA à 0,5 %, pH 7,3.
L'aliquotage n'est pas nécessaire pour le stockage à -20C

***** Les 20ul contiennent 0,1% de BSA.**

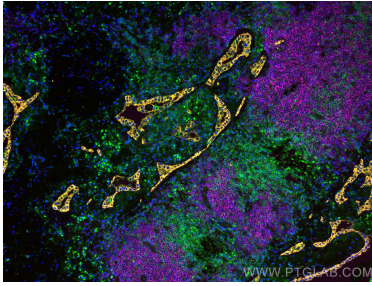
For technical support and original validation data for this product please contact:

T: 1 (888) 4PTGLAB (1-888-478-4522) (toll free in USA), or 1(312) 455-8498 (outside USA)

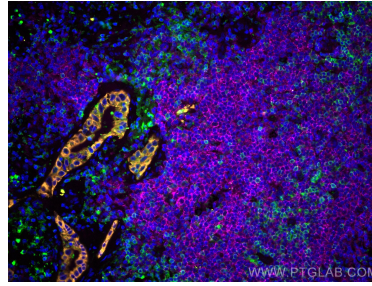
E: proteintech@ptglab.com
W: ptglab.com

This product is exclusively available under Proteintech Group brand and is not available to purchase from any other manufacturer.

Données de validation sélectionnées



Immunofluorescent analysis of (4% PFA) fixed human lung cancer tissue using CoraLite® Plus 488 CD3 antibody (CL488-60181, Clone: 3F3A1) at dilution of 1:100, CoraLite®555 pan-keratin antibody (CL555-26411, orange), CoraLite® Plus 647 CD20 antibody (CL647-60271, Clone: 4A7G3, Magenta).



Immunofluorescent analysis of (4% PFA) fixed human lung cancer tissue using CoraLite® Plus 488 CD3 antibody (CL488-60181, Clone: 3F3A1) at dilution of 1:100, CoraLite®555 pan-keratin antibody (CL555-26411, orange), CoraLite® Plus 647 CD20 antibody (CL647-60271, Clone: 4A7G3, Magenta).