

À des fins de recherche uniquement

Anticorps Monoclonal anti-Cytokeratin 20



Numéro de catalogue: CL488-60183

Informations de base

Numéro de catalogue: CL488-60183	Numéro d'acquisition GenBank: BC031559	Méthode de purification: Purification par protéine A
Taille: 100ul , Concentration: 1000 µg/ml by Nanodrop;	Identification du gène (NCBI): 54474	CloneNo.: 4D10A4
Hôte: Mouse	Nom complet: keratin 20	Dilutions recommandées: IF 1:50-1:500
Isotype: IgG2b	MW calculé 424 aa, 48 kDa	Excitation/Emission maxima wavelengths: 493 nm / 522 nm
Immunogen Catalog Number: AG11336		

Applications

Applications testées: IF	Contrôles positifs: IF : cellules HT-29, tissu de côlon humain
Spécificité de l'espèce: Humain	

Informations générales

Keratins are a large family of proteins that form the intermediate filament cytoskeleton of epithelial cells. Keratin expression is highly regulated, tissue specific, and varies according to cell-state. Type I keratins consist of acidic, low molecular weight proteins with MW ranging from 40 kDa (KRT19) to 64 kDa (KRT9). Type 2 keratins consist of basic or neutral, high molecular weight proteins with MW from 52 kDa (KRT8) to 67 kDa (KRT18). Keratin 20 is a type I cytokeratin. It is a major cellular protein of mature enterocytes and goblet cells and is specifically found in the gastric and intestinal mucosa.

Stockage

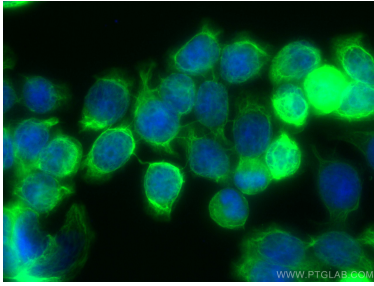
Stockage:
Stocker à -20 °C. Éviter toute exposition à la lumière. Stable pendant un an après l'expédition.
Tampon de stockage:
PBS avec glycérol à 50 %, Proclin300 à 0,05 % et BSA à 0,5 %, pH 7,3.
L'aliquotage n'est pas nécessaire pour le stockage à -20C

***** Les 20ul contiennent 0,1% de BSA.**

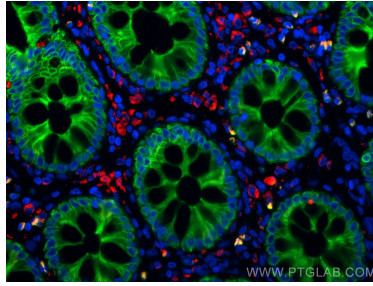
For technical support and original validation data for this product please contact:
T: 1 (888) 4PTGLAB (1-888-478-4522) (toll free in USA), or 1(312) 455-8498 (outside USA)
E: proteintech@ptglab.com
W: ptglab.com

This product is exclusively available under Proteintech Group brand and is not available to purchase from any other manufacturer.

Données de validation sélectionnées



Immunofluorescent analysis of (-20°C Ethanol) fixed HT-29 cells using CoraLite® Plus 488 Cytokeratin 20 antibody (CL488-60183, Clone: 4D10A4) at dilution of 1:200.



Immunofluorescent analysis of (4% PFA) fixed human colon tissue using CoraLite® Plus 488 Cytokeratin 20 antibody (CL488-60183, Clone: 4D10A4) at dilution of 1:200, CoraLite® 594 CD68 antibody (CL594-25747, red).