

À des fins de recherche uniquement

# Anticorps Monoclonal anti-Cyclin D1

Numéro de catalogue: **CL488-60186** **Phare**



## Informations de base

Numéro de catalogue: CL488-60186	Numéro d'acquisition GenBank: BC000076	Méthode de purification: Purification par protéine A
Taille: 100ul , Concentration: 1000 µg/ml by Nanodrop;	Identification du gène (NCBI): 595	CloneNo.: 2G3G5
Hôte: Mouse	Nom complet: cyclin D1	Excitation/Emission maxima wavelengths: 493 nm / 522 nm
Isotype: IgG2b	MW calculé 295 aa, 34 kDa	
Immunogen Catalog Number: AG0689	MW observés: 34 kDa	

## Applications

Applications testées:  
FC (Intra)  
Spécificité de l'espèce:  
Humain, souris

## Informations générales

CCND1 (cyclin D1), also known as PRAD1 or BCL1, belongs to the highly conserved cyclin family, whose members are characterized by a dramatic periodicity in protein abundance throughout the cell cycle. CCND1 forms a complex with and functions as a regulatory subunit of CDK4 or CDK6, whose activity is required for cell cycle G1/S transition. The CCND1 gene, located on 11q13 has been reported to be overexpressed in mantle cell lymphoma (MCL) due to the chromosomal translocation. CCND1 has been shown to interact with tumor suppressor protein Rb and the expression of this gene is regulated positively by Rb. Over-expression of CCND1 is known to correlate with the early onset of cancer and risk of tumor progression and metastasis.

## Stockage

Stockage:  
Stocker à -20 °C. Éviter toute exposition à la lumière.  
Tampon de stockage:  
PBS avec glycérol à 50 %, Proclin300 à 0,05 % et BSA à 0,5 %, pH 7,3.  
L'aliquotage n'est pas nécessaire pour le stockage à -20C

**\*\*\* Les 20ul contiennent 0,1% de BSA.**

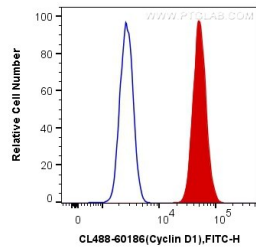
For technical support and original validation data for this product please contact:

T: 1 (888) 4PTGLAB (1-888-478-4522) (toll free  
in USA), or 1(312) 455-8498 (outside USA)

E: [proteintech@ptglab.com](mailto:proteintech@ptglab.com)  
W: [ptglab.com](http://ptglab.com)

**This product is exclusively available under Proteintech Group brand and is not available to purchase from any other manufacturer.**

## Données de validation sélectionnées



1X10<sup>6</sup> SH-SY5Y cells were intracellularly stained with 0.4 ug CoraLite® Plus 488 Anti-Human Cyclin D1 (CL488-60186, Clone:2G3G5) (red), or 0.4 ug Mouse IgG2b Isotype Control (CL488-66360-3, Clone: K11B8C4B5) (blue). Cells were fixed and permeabilized with Transcription Factor Staining Buffer Kit (PF00011).