

À des fins de recherche uniquement

Anticorps Monoclonal anti-Cytoglobin



Numéro de catalogue: **CL488-60228**

Informations de base

| | | |
|--------------------------------------------------------------|-------------------------------------------|---------------------------------------------------------------|
| Numéro de catalogue: CL488-60228 | Numéro d'acquisition GenBank: BC029798 | Méthode de purification: Purification par protéine G |
| Taille: 100ul , Concentration: 1000 µg/ml by Nanodrop; | Identification du gène (NCBI): 114757 | CloneNo.: 4C7E11 |
| Hôte: Mouse | Nom complet: cytoglobin | Dilutions recommandées: IF 1:50-1:500 |
| Isotype: IgG1 | MW calculé 190 aa, 21 kDa | Excitation/Emission maxima wavelengths: 493 nm / 522 nm |
| Immunogen Catalog Number: AG4161 | MW observés: 27-29 kDa | |

Applications

| | |
|-------------------------------------------------------|--------------------------------------------|
| Applications testées: IF | Contrôles positifs: IF : cellules HeLa, |
| Spécificité de l'espèce: Humain, porc, rat, souris | |

Informations générales

Cytoglobin is a ubiquitously expressed hexacoordinate hemoglobin that may facilitate diffusion of oxygen through tissues. The protein, with calculated MW of 21 kDa, runs as a 29 kDa one in canine retina, kidney, liver, lung, and heart. It may be caused by posttranslational modification of the protein. Various immuno-staining patterns were reported including nuclear, cytoplasm and extracellular location.

Stockage

Stockage:
Stocker à -20 °C. Éviter toute exposition à la lumière. Stable pendant un an après l'expédition.
Tampon de stockage:
PBS avec glycérol à 50 %, Proclin300 à 0,05 % et BSA à 0,5 %, pH 7,3.
L'aliquotage n'est pas nécessaire pour le stockage à -20C

***** Les 20ul contiennent 0,1% de BSA.**

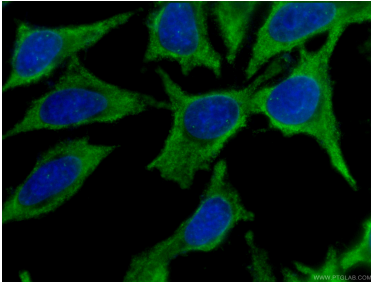
For technical support and original validation data for this product please contact:

T: 1 (888) 4PTGLAB (1-888-478-4522) (toll free
in USA), or 1(312) 455-8498 (outside USA)

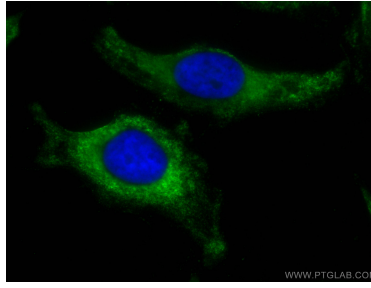
E: proteintech@ptglab.com
W: ptglab.com

This product is exclusively available under Proteintech Group brand and is not available to purchase from any other manufacturer.

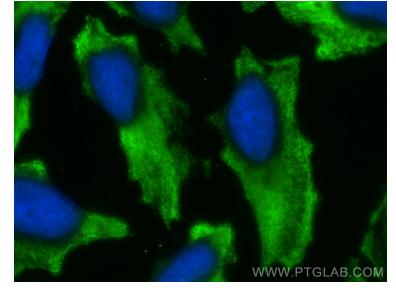
Données de validation sélectionnées



Immunofluorescent analysis of (-20°C Ethanol) fixed HeLa cells using CL488-60228 (Cytoglobin antibody) at dilution of 1:100. .



Immunofluorescent analysis of (-20°C Methanol) fixed HeLa cells using CoraLite® Plus 488 Cytoglobin antibody (CL488-60228, Clone: 4C7E11) at dilution of 1:200.



Immunofluorescent analysis of (-20°C Methanol) fixed HeLa cells using CoraLite® Plus 488 Cytoglobin antibody (CL488-60228, Clone: 4C7E11) at dilution of 1:200.