

À des fins de recherche uniquement

# Anticorps Monoclonal anti-Thyroglobulin



Numéro de catalogue: CL488-60272

## Informations de base

Numéro de catalogue: CL488-60272	Numéro d'acquisition GenBank: BC140933	Méthode de purification: Purification par protéine A
Taille: 100ul, Concentration: 1000 µg/ml by Nanodrop;	Identification du gène (NCBI): 7038	CloneNo.: 4D3C5
Hôte: Mouse	Nom complet: thyroglobulin	Dilutions recommandées: IF 1:50-1:500
Isotype: IgG2a	MW calculé 2768 aa, 305 kDa	Excitation/Emission maxima wavelengths: 493 nm / 522 nm
Immunogen Catalog Number: AG18070		

## Applications

Applications testées: IF	Contrôles positifs: IF : tissu de cancer de la thyroïde humain,
Spécificité de l'espèce: Humain	

## Informations générales

Thyroglobulin (Tg) is a glycoprotein homodimer produced predominantly by the thyroid gland. It acts as a substrate for the synthesis of thyroxine and triiodothyronine as well as the storage of the inactive forms of thyroid hormone and iodine. Thyroglobulin is secreted from the endoplasmic reticulum to its site of iodination, and subsequent thyroxine biosynthesis, in the follicular lumen. Mutations in this gene cause thyroid dysmorphogenesis, manifested as goiter, and are associated with moderate to severe congenital hypothyroidism. Polymorphisms in this gene are associated with susceptibility to autoimmune thyroid diseases (AITD) such as Graves disease and Hashimoto thyroiditis.

## Stockage

**Stockage:**  
Stocker à -20 °C. Éviter toute exposition à la lumière.  
**Tampon de stockage:**  
PBS avec glycérol à 50 %, Proclin300 à 0,05 % et BSA à 0,5 %, pH 7,3.  
L'aliquotage n'est pas nécessaire pour le stockage à -20C

**\*\*\* Les 20ul contiennent 0,1% de BSA.**

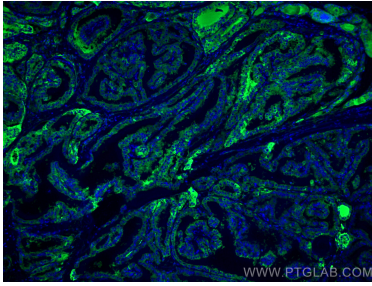
For technical support and original validation data for this product please contact:

T: 1 (888) 4PTGLAB (1-888-478-4522) (toll free  
in USA), or 1(312) 455-8498 (outside USA)

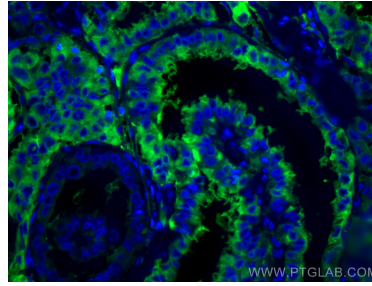
E: [proteintech@ptglab.com](mailto:proteintech@ptglab.com)  
W: [ptglab.com](http://ptglab.com)

**This product is exclusively available under Proteintech Group brand and is not available to purchase from any other manufacturer.**

## Données de validation sélectionnées



Immunofluorescent analysis of (4% PFA) fixed human thyroid cancer tissue using CoraLite® Plus 488 Thyroglobulin antibody (CL488-60272, Clone: 4D3C5 ) at dilution of 1:200.



Immunofluorescent analysis of (4% PFA) fixed human thyroid cancer tissue using CoraLite® Plus 488 Thyroglobulin antibody (CL488-60272, Clone: 4D3C5 ) at dilution of 1:200.