

À des fins de recherche uniquement

Anticorps Monoclonal anti-HER2/ErbB2



Numéro de catalogue: **CL488-60311**

Informations de base

Numéro de catalogue: CL488-60311	Numéro d'acquisition GenBank: BC156755	Méthode de purification: Purification par protéine A
Taille: 100ul , Concentration: 1000 µg/ml by Nanodrop;	Identification du gène (NCBI): 2064	CloneNo.: 1B12A7
Hôte: Mouse	Nom complet: v-erb-b2 erythroblastic leukemia viral oncogene homolog 2, neuro/glioblastoma derived oncogene homolog (avian)	Dilutions recommandées: IF 1:50-1:500
Isotype: IgG2b	MW calculé 1255 aa, 138 kDa	Excitation/Emission maxima wavelengths: 493 nm / 522 nm
Immunogen Catalog Number: AG16463		

Applications

Applications testées: FC, IF	Contrôles positifs: IF : tissu de cancer du sein humain,
Spécificité de l'espèce: Humain	

Informations générales

HER2, also known as ErbB2 and Neu, is a 185-kDa transmembrane glycoprotein that is a member of the epidermal growth factor (EGF) receptor family of receptor tyrosine kinases. It has no ligand binding domain of its own and therefore cannot bind growth factors. However, it does bind tightly to other ligand-bound EGF receptor family members to form a heterodimer, stabilizing ligand binding and enhancing kinase-mediated activation of downstream signalling pathways, such as those involving mitogen-activated protein kinase and phosphatidylinositol-3 kinase. Amplification and/or overexpression of HER2 have been reported in numerous cancers, including breast and ovarian tumors. HER2 is a therapeutic target for the treatment of breast cancer and other carcinomas.

Stockage

Stockage:
Stocker à -20 °C. Éviter toute exposition à la lumière. Stable pendant un an après l'expédition.
Tampon de stockage:
PBS avec glycérol à 50 %, Proclin300 à 0,05 % et BSA à 0,5 %, pH 7,3.
L'aliquotage n'est pas nécessaire pour le stockage à -20C

***** Les 20ul contiennent 0,1% de BSA.**

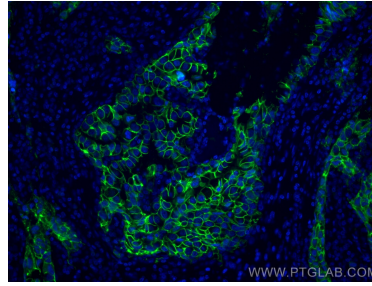
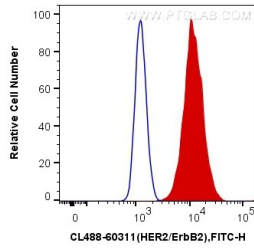
For technical support and original validation data for this product please contact:

T: 1 (888) 4PTGLAB (1-888-478-4522) (toll free in USA), or 1(312) 455-8498 (outside USA)

E: proteintech@ptglab.com
W: ptglab.com

This product is exclusively available under Proteintech Group brand and is not available to purchase from any other manufacturer.

Données de validation sélectionnées



1X10⁶ SK-BR-3 cells were surface stained with 0.4 ug CoraLite® Plus 488 Anti-Human HER2/ ErbB2 (CL488-60311, Clone:1B12A7) (red), or 0.4 ug Mouse IgG2b Isotype Control (CL488-66360-3, Clone: K11B8C4B5) (blue). Cells were not fixed.

Immunofluorescent analysis of (4% PFA) fixed human breast cancer tissue using CoraLite® Plus 488 HER2/ErbB2 antibody (CL488-60311, Clone: 1B12A7) at dilution of 1:200.