

À des fins de recherche uniquement

# Anticorps Monoclonal anti-VCP

Numéro de catalogue: **CL488-60316** **Phare**



## Informations de base

Numéro de catalogue:	CL488-60316	Numéro d'acquisition GenBank:	BC007562	Méthode de purification:	Purification par protéine G
Taille:	100ul , Concentration: 1000 µg/ml by Nanodrop;	Identification du gène (NCBI):	7415	CloneNo.:	2A4B10
Hôte:	Mouse	Nom complet:	valosin-containing protein	Dilutions recommandées:	IF 1:50-1:500
Isotype:	IgG1	MW calculé	89 kDa	Excitation/Emission maxima wavelengths:	488 nm / 515 nm
Immunogen Catalog Number:	AG1002	MW observés:	89 kDa		

## Applications

Applications testées:	IF	Contrôles positifs:	IF : cellules HeLa,
Spécificité de l'espèce:	Humain, souris		

## Informations générales

VCP (Valosin-containing protein), also known as TER ATPase and 15S Mg<sup>2+</sup>-ATPase p97 subunit, belongs to the AAA ATPase family. VCP was first identified as a result of attempts to clone a putative peptide hormone called valosin. It was found that the cloned cDNA encoded a ubiquitously expressed 90 kDa cytosolic protein, termed VCP, which showed none of the characteristics of a peptide hormone precursor (PMID:1382975). Defects in VCP are the cause of inclusion body myopathy with early-onset Paget disease and frontotemporal dementia (IBMPFD) and amyotrophic lateral sclerosis type 14 with or without frontotemporal dementia (ALS14). VCP has a calculated molecular weight of 89 kDa and an apparent molecular weight of 90-100 kDa (PMID: 15732117, 1382975).

## Stockage

**Stockage:**  
Stocker à -20 °C. Éviter toute exposition à la lumière. Stable pendant un an après l'expédition.  
**Tampon de stockage:**  
PBS avec glycérol à 50 %, Proclin300 à 0,05 % et BSA à 0,5 %, pH 7,3.  
L'aliquotage n'est pas nécessaire pour le stockage à -20C

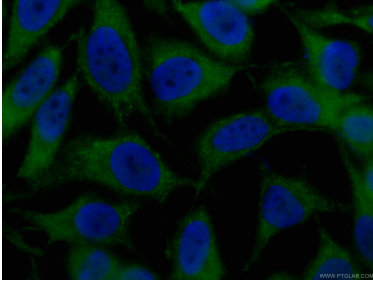
**\*\*\* Les 20ul contiennent 0,1% de BSA.**

For technical support and original validation data for this product please contact:  
T: 1 (888) 4PTGLAB (1-888-478-4522) (toll free in USA), or 1(312) 455-8498 (outside USA)  
E: [proteintech@ptglab.com](mailto:proteintech@ptglab.com)  
W: [ptglab.com](http://ptglab.com)

This product is exclusively available under Proteintech Group brand and is not available to purchase from any other manufacturer.

---

## Données de validation sélectionnées



Immunofluorescent analysis of (-20°C Ethanol) fixed HeLa cells using CL488-60316 (VCP antibody) at dilution of 1:100.