

À des fins de recherche uniquement

Anticorps Monoclonal anti-LIN28

Numéro de catalogue: **CL488-60344**



Informations de base

| | | |
|---|---|---|
| Numéro de catalogue: CL488-60344 | Numéro d'acquisition GenBank: BC028566 | Méthode de purification: Purification par protéine G |
| Taille: 100ul, Concentration: 1000 µg/ml by Nanodrop; | Identification du gène (NCBI): 79727 | CloneNo.: 4F5G6 |
| Hôte: Mouse | Nom complet: lin-28 homolog (C. elegans) | Dilutions recommandées: IF 1:50-1:500 |
| Isotype: IgG1 | MW calculé: 209 aa, 23 kDa | Excitation/Emission maxima wavelengths: 493 nm / 522 nm |
| Immunogen Catalog Number: AG2312 | MW observés: 28 kDa | |

Applications

| | |
|------------------------------------|--|
| Applications testées: IF | Contrôles positifs: IF : tissu de cancer de la prostate humain, |
| Spécificité de l'espèce: Humain | |

Informations générales

LIN28 is one of the four key human factors (OCT4, SOX2, NANOG and LIN28) used to reprogram human fibroblasts to an embryonic stem (ES) cell-like state known as the induced pluripotent stem (Ips) cell. Lin28 is a marker of undifferentiated human embryonic stem cells and a cytoplasmic Mrna-binding protein that binds to and enhances the translation of the IGF2 Mrna. LIN28 has also been shown to bind to the let-7 pre-miRNA and block production of the mature let-7 microRNA in mouse embryonic stem cells. The calculated molecular weight of LIN28 is 23 kDa, but the modified LIN28 is about 28 kDa.

Stockage

Stockage:
Stocker à -20 °C. Éviter toute exposition à la lumière.
Tampon de stockage:
PBS avec glycérol à 50 %, Proclin300 à 0,05 % et BSA à 0,5 %, pH 7,3.
L'aliquotage n'est pas nécessaire pour le stockage à -20C

***** Les 20ul contiennent 0,1% de BSA.**

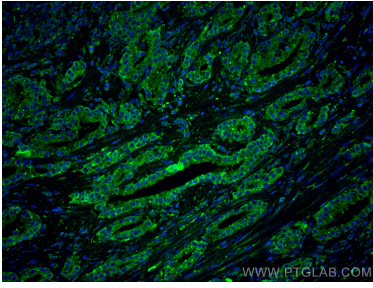
For technical support and original validation data for this product please contact:

T: 1 (888) 4PTGLAB (1-888-478-4522) (toll free
in USA), or 1(312) 455-8498 (outside USA)

E: proteintech@ptglab.com
W: ptglab.com

This product is exclusively available under Proteintech Group brand and is not available to purchase from any other manufacturer.

Données de validation sélectionnées



Immunofluorescent analysis of (4% PFA) fixed human prostate cancer tissue using CoraLite® Plus 488 LIN28 antibody (CL488-60344, Clone: 4F5G6) at dilution of 1:200.