

À des fins de recherche uniquement

Anticorps Monoclonal anti-NR1H2

Numéro de catalogue: **CL488-60345** **Phare**



Informations de base

Numéro de catalogue: CL488-60345	Numéro d'acquisition GenBank: BC047750	Méthode de purification: Purification par protéine G
Taille: 100ul , Concentration: 1000 µg/ml by Nanodrop;	Identification du gène (NCBI): 7376	CloneNo.: 1E12B10
Hôte: Mouse	Nom complet: nuclear receptor subfamily 1, group H, member 2	Excitation/Emission maxima wavelengths: 493 nm / 522 nm
Isotype: IgG1	MW calculé 51 kDa	
Immunogen Catalog Number: AG5635	MW observés: 51 kDa	

Applications

Applications testées:
FC (Intra)

Spécificité de l'espèce:
Humain, porc

Informations générales

NR1H2, also known as LXRB, is a liver X receptors, which form a subfamily of the nuclear receptor superfamily and are key regulators of macrophage function, controlling transcriptional programs involved in lipid homeostasis and inflammation. It preferentially bind to double-stranded oligonucleotide direct repeats, which have the consensus half-site sequence 5'-AGGTC A-3' and 4-nt spacing (DR-4). It involves in the regulation of cholesterol uptake through MYLIP-dependent ubiquitination of LDLR, VLDLR and LRP8.

Stockage

Stockage:
Stocker à -20 °C. Éviter toute exposition à la lumière. Stable pendant un an après l'expédition.

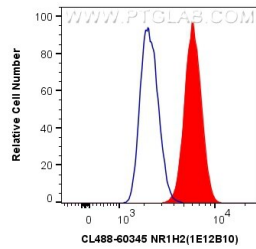
Tampon de stockage:
PBS avec glycérol à 50 %, Proclin300 à 0,05 % et BSA à 0,5 %, pH 7,3.
L'aliquotage n'est pas nécessaire pour le stockage à -20C

***** Les 20ul contiennent 0,1% de BSA.**

For technical support and original validation data for this product please contact:
T: 1 (888) 4PTGLAB (1-888-478-4522) (toll free in USA), or 1(312) 455-8498 (outside USA) E: proteintech@ptglab.com W: ptglab.com

This product is exclusively available under Proteintech Group brand and is not available to purchase from any other manufacturer.

Données de validation sélectionnées



1X10⁶ HepG2 cells were intracellularly stained with 0.8 ug CoraLite® Plus 488 Anti-Human NR1H2 (CL488-60345, Clone:1E12B10) (red), or 0.8 ug CoraLite® Plus 488 Mouse IgG1 Isotype Control (MOPC-21) (CL488-65124, Clone: MOPC-21) (blue). Cells were fixed and permeabilized with Transcription Factor Staining Buffer Kit (PF00011).