

À des fins de recherche uniquement

Anticorps Monoclonal anti-CD107a / LAMP1



Numéro de catalogue: **CL488-65050**

1 Publications

Informations de base

Numéro de catalogue: CL488-65050	Numéro d'acquisition GenBank: BC006785	Méthode de purification: Purification par affinité
Taille: 100tests , 5 µl/test	Identification du gène (NCBI): 16783	CloneNo.: 1D4B
Hôte: Rat	Nom complet: lysosomal-associated membrane protein 1	Dilutions recommandées: IF 1:50-1:500
Isotype: IgG2a, kappa		Excitation/Emission maxima wavelengths: 493 nm / 522 nm

Applications

Applications testées: FC (Intra), IF	Contrôles positifs: IF : cellules NIH/3T3,
Demandes citées: IHC	
Spécificité de l'espèce: souris	
Espèces citées: souris	

Informations générales

LAMP1 (CD107a) is a heavily glycosylated membrane protein enriched in the lysosomal membrane. LAMP1 is extensively glycosylated with asparagine-linked oligosaccharides which protect it from intracellular proteolysis (PMID: 10521503). Although LAMP1 is expressed largely in the endosome-lysosomal membrane of cells, it is also found on the plasma membrane (PMID: 16168398). Elevated LAMP1 expression at the cell surface has also been detected during platelet and granulocytic cell activation, as well as in some tumor cells (PMID: 29085473). LAMP1 functions to provide selectins with carbohydrate ligands. This protein has also been shown to be a marker of degranulation on lymphocytes such as CD8+ and NK cells and may also play a role in tumor cell differentiation and metastasis (PMID: 18835598; 29085473; 9426697).

Publications notables

Autrice	Pubmed ID	Journal	Application
Bolin Zheng	37223476	Research (Wash D C)	IHC

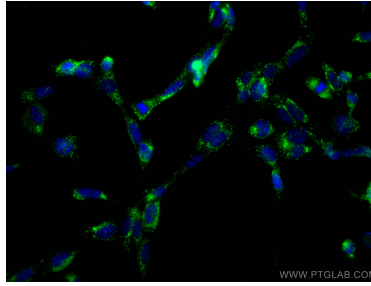
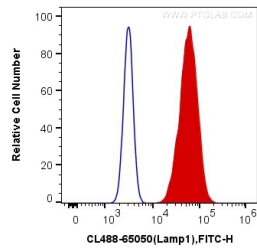
Stockage

Stockage:
Store at 2-8°C. Avoid exposure to light. Stable for one year after shipment.
Tampon de stockage:
PBS avec azoture de sodium à 0,1 % et BSA à 0,5 %, pH 7,3.

For technical support and original validation data for this product please contact:
T: 1 (888) 4PTGLAB (1-888-478-4522) (toll free in USA), or 1(312) 455-8498 (outside USA)
E: proteintech@ptglab.com
W: ptglab.com

This product is exclusively available under Proteintech Group brand and is not available to purchase from any other manufacturer.

Données de validation sélectionnées



1X10⁶ NIH/3T3 cells were intracellularly stained with 5 μ l CoraLite® Plus 488 Anti-Mouse CD107a (CL488-65050, Clone:1D4B) (red), or Control Antibody. Cells were fixed with 4% PFA and permeabilized with Flow Cytometry Perm Buffer (PF00011-C).

Immunofluorescent analysis of (-20°C Ethanol) fixed NIH/3T3 cells using CoraLite® Plus 488 CD107a antibody (CL488-65050, Clone: 1D4B) at dilution of 1:400.