

À des fins de recherche uniquement

Anticorps Monoclonal anti-CD11b

Numéro de catalogue: CL488-65055

1 Publications



Informations de base

Numéro de catalogue:

CL488-65055

Taille:

100 tests, 5 µl/test

Hôte:

Rat

Isotype:

IgG2b, kappa

Numéro d'acquisition GenBank:

BC156991

Identification du gène (NCBI):

16409

Nom complet:

integrin alpha M

Méthode de purification:

Purification par affinité

CloneNo.:

M1/70

Dilutions recommandées:

IF 1:200-1:800

Excitation/Emission maxima

wavelengths:

493 nm / 522 nm

Applications

Applications testées:

FC, IF

Demandes citées:

FC

Spécificité de l'espèce:

Humain, souris

Espèces citées:

souris

Contrôles positifs:

IF : splénocytes de souris,

Informations générales

Integrins are cell adhesion receptors that are heterodimers composed of non-covalently associated α and β subunits (PMID: 9779984). CD11b, also known as Integrin alpha M or CR3A, belongs to the integrin alpha chain family. CD11b forms an α/β heterodimer with CD18 (integrin $\beta 2$). CD11b/CD18 is implicated in various adhesive interactions of monocytes, macrophages and granulocytes as well as in mediating the uptake of complement-coated particles and pathogens (PMID: 9558116; 20008295). CD11b/CD18 is a receptor for the complement protein fragment iC3b, and is also a receptor for fibrinogen, factor X and ICAM1 (PMID: 2971974; 15485828).

Publications notables

Autrice	Pubmed ID	Journal	Application
Luqiu Feng	36918933	Vet Res	FC

Stockage

Stockage:

Store at 2-8°C. Avoid exposure to light. Stable for one year after shipment.

Tampon de stockage:

PBS avec azoture de sodium à 0,1 % et BSA à 0,5 %, pH 7,3.

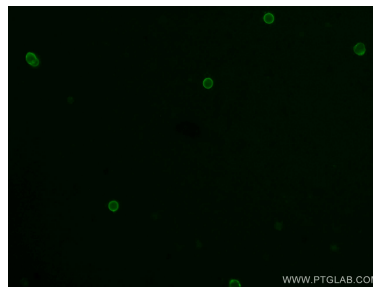
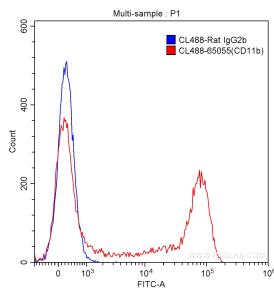
For technical support and original validation data for this product please contact:

T: 1 (888) 4PTGLAB (1-888-478-4522) (toll free in USA), or 1(312) 455-8498 (outside USA)

E: proteintech@ptglab.com
W: ptglab.com

This product is exclusively available under Proteintech Group brand and is not available to purchase from any other manufacturer.

Données de validation sélectionnées



1×10^6 C57BL/6 mouse bone marrow cells were surface stained with 5.00 μ l CoraLite® Plus 488-conjugated Anti-Mouse CD11b (CL488-65055, Clone: M1/70) (red) or isotype control antibody (blue). Cells were not fixed.

Immunofluorescent analysis of mouse splenocytes using CoraLite® Plus 488-conjugated Anti-Mouse CD11b (CL488-65055, Clone: M1/70) at dilution of 1:400.