

À des fins de recherche uniquement

# Anticorps Monoclonal anti-KLRG1

Numéro de catalogue: **CL488-65084**



## Informations de base

Numéro de catalogue:  
CL488-65084

Taille:  
100tests , 5 µl/test

Hôte:  
Golden Syrian Hamster

Isotype:  
IgG

Numéro d'acquisition GenBank:  
BC101953

Identification du gène (NCBI):  
50928

Nom complet:  
killer cell lectin-like receptor  
subfamily G, member 1

Méthode de purification:  
Purification par affinité

CloneNo.:  
2F1

Excitation/Emission maxima  
wavelengths:  
493 nm / 522 nm

## Applications

Applications testées:  
FC

Spécificité de l'espèce:  
souris

## Informations générales

KLRG1 (killer cell lectin-like receptor subfamily G, member 1) is a C-type lectin inhibitory receptor that contains an immunoreceptor tyrosine-based inhibitory motif (ITIM) in its cytoplasmic domain. KLRG1 is expressed by subsets of NK and T cells, existing both as a monomer and as a disulfide-linked homodimer (PMID: 10741410; 19604491). It is considered to be a cell differentiation marker for NK and T cells and is strongly induced by viral and other infections (PMID: 20373518). Through interactions with members of the cadherin family, KLRG1 plays an inhibitory role on NK- and T-cell function (PMID: 19009530; 20373518).

## Stockage

Stockage:

Store at 2-8°C. Avoid exposure to light. Stable for one year after shipment.

Tampon de stockage:

PBS avec azoture de sodium à 0,1 % et BSA à 0,5 %, pH 7,3.

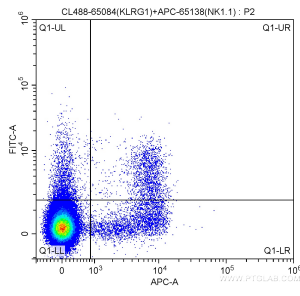
For technical support and original validation data for this product please contact:

T: 1 (888) 4PTGLAB (1-888-478-4522) (toll free  
in USA), or 1(312) 455-8498 (outside USA)

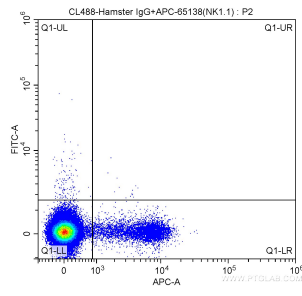
E: [proteintech@ptglab.com](mailto:proteintech@ptglab.com)  
W: [ptglab.com](http://ptglab.com)

**This product is exclusively available under Proteintech Group brand and is not available to purchase from any other manufacturer.**

## Données de validation sélectionnées



1X10<sup>6</sup> mouse splenocytes were surface stained with APC Anti-Mouse NK1.1 (CD161) (APC-65138, Clone: PK136) and 5 ul CoraLite® Plus 488 Anti-Mouse KLRG1 (CL488-65084, Clone: 2F1). Cells were not fixed.



1X10<sup>6</sup> mouse splenocytes were surface stained with APC Anti-Mouse NK1.1 (CD161) (APC-65138, Clone: PK136) and CoraLite® Plus 488 conjugated Hamster IgG isotype control. Cells were not fixed.