

À des fins de recherche uniquement

Anticorps Monoclonal anti-CD45.1

Numéro de catalogue: CL488-65092



Informations de base

Numéro de catalogue:
CL488-65092

Taille:
100 tests, 5 µl/test

Hôte:
Mouse

Isotype:
IgG2a

Numéro d'acquisition GenBank:
BC028512

Identification du gène (NCBI):
19264

Nom complet:
protein tyrosine phosphatase,
receptor type, C

Méthode de purification:
Purification par affinité

CloneNo.:
A20

Excitation/Emission maxima
wavelengths:
493 nm / 522 nm

Applications

Applications testées:
FC

Spécificité de l'espèce:
souris

Informations générales

CD45, also known as protein tyrosine phosphatase, receptor type C, is a type I transmembrane protein expressed on the surface of all haematopoietic cells with the exception of erythrocytes and platelets (PMID: 3489673; 28615666). CD45 is a pan-haematopoietic cell marker and has been shown to be essential for T- and B-cell activation and signalling (PMID: 9429890; 16378097). Allelic variants of mouse CD45, CD45.1 (Ly5.1) and CD45.2 (Ly5.1), have been established as a marker system to track haematopoietic cells following congenic mouse bone marrow transplants (PMID: 28615666). CD45.2 is the common form and is expressed by most of the established strains, while CD45.1 is found in only a few like the SJL mouse strain (PMID: 3489673).

Stockage

Stockage:

Stocker à une température comprise entre 2 °C et 8 °C. Éviter toute exposition à la lumière.

Tampon de stockage:

PBS avec azoture de sodium à 0,1 % et BSA à 0,5 %, pH 7,3.

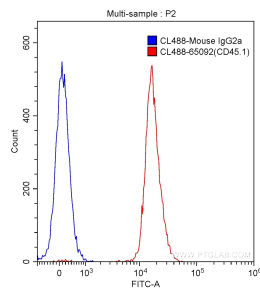
For technical support and original validation data for this product please contact:

T: 1 (888) 4PTGLAB (1-888-478-4522) (toll free
in USA), or 1(312) 455-8498 (outside USA)

E: proteintech@ptglab.com
W: ptglab.com

This product is exclusively available under Proteintech Group brand and is not available to purchase from any other manufacturer.

Données de validation sélectionnées



1X10⁶ SJL mouse splenocytes were surface stained with 5.00 ul CoraLite® Plus 488-conjugated Anti-Mouse CD45.1 (CL488-65092, Clone: A20) (red) or isotype control antibody (blue). Cells were not fixed.