

À des fins de recherche uniquement

# Anticorps Monoclonal anti-CD40

Numéro de catalogue: **CL488-65103**



## Informations de base

Numéro de catalogue:  
CL488-65103

Taille:  
100 tests, 5 µl/test

Hôte:  
Mouse

Isotype:  
Mouse IgG1, kappa

Numéro d'acquisition GenBank:  
BC012419

Identification du gène (NCBI):  
958

Nom complet:  
CD40 molecule, TNF receptor  
superfamily member 5

MW calculé  
277 aa, 31 kDa

Méthode de purification:  
Purification par affinité

CloneNo.:  
G28.5

Excitation/Emission maxima  
wavelengths:  
493 nm / 522 nm

## Applications

Applications testées:  
FC

Spécificité de l'espèce:  
Humain

## Informations générales

CD40, also named as TNFRSF5 and Bp50, is a type I transmembrane protein that belongs to the tumor necrosis factor-R (TNF-R) family (PMID: 10647992). CD40 is expressed on B cells, dendritic cells (DCs), monocytes, platelets, and macrophages as well as by non-hematopoietic cells such as myofibroblasts, fibroblasts, epithelial, and endothelial cells (PMID: 19426221). It is a receptor for TNFSF5/CD40LG. CD40L/CD40 interactions are essential for immunoglobulin (Ig) isotype switching, germinal center formation and the development of B cell memory (PMID: 7516405; 11675497).

## Stockage

Stockage:

Stocker à une température comprise entre 2 °C et 8 °C. Éviter toute exposition à la lumière.

Tampon de stockage:

PBS avec azoture de sodium à 0,1 % et BSA à 0,5 %, pH 7,3.

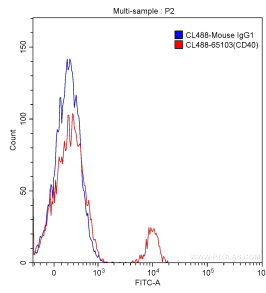
For technical support and original validation data for this product please contact:

T: 1 (888) 4PTGLAB (1-888-478-4522) (toll free  
in USA), or 1(312) 455-8498 (outside USA)

E: [proteintech@ptglab.com](mailto:proteintech@ptglab.com)  
W: [ptglab.com](http://ptglab.com)

This product is exclusively available under Proteintech Group brand and is not available to purchase from any other manufacturer.

## Données de validation sélectionnées



1X10<sup>6</sup> human peripheral blood lymphocytes were surface stained with 5.00 ul/test CoraLite® Plus 488-conjugated Anti-Human CD40 (CL488-65103, Clone: G28.5) (red) or isotype control antibody (blue). Cells were not fixed.