

À des fins de recherche uniquement

Anticorps Monoclonal anti-CD69

Numéro de catalogue: **CL488-65105**



Informations de base

Numéro de catalogue: CL488-65105	Numéro d'acquisition GenBank: BC106997	Méthode de purification: Purification par affinité
Taille: 100tests , 5 µl/test	Identification du gène (NCBI): 12515	CloneNo.: H1.2F3
Hôte: Armenian Hamster	Nom complet: CD69 antigen	Excitation/Emission maxima wavelengths: 493 nm / 522 nm
Isotype: Armenian Hamster IgG		

Applications

Applications testées:
FC

Spécificité de l'espèce:
souris

Informations générales

CD69, also known as AIM, EA-1, Leu-23, and MLR3, is a type II transmembrane glycoprotein that belongs to the C-type lectin superfamily (PMID: 8340758; 7804122). CD69 is constitutively expressed by mature thymocytes, platelets, several subsets of tissue resident immune cells (including resident memory T cells and gamma delta T cells), and is inducibly expressed by activated T cells, B cells, natural killer (NK) cells, monocytes, neutrophils (PMID: 8100776; 28475283). CD69 has been identified as an early activation marker of lymphocytes and is commonly used as a marker of activated lymphocytes and NK cells (PMID: 28475283; 25759842). It is involved in the regulation of immune responses (PMID: 15745855).

Stockage

Stockage:
Stocker à une température comprise entre 2 °C et 8 °C. Éviter toute exposition à la lumière.

Tampon de stockage:
PBS avec azoture de sodium à 0,1 % et BSA à 0,5 %, pH 7,3.

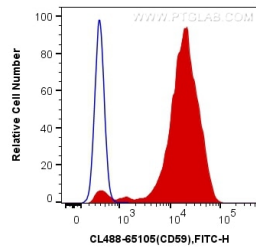
For technical support and original validation data for this product please contact:

T: 1 (888) 4PTGLAB (1-888-478-4522) (toll free in USA), or 1(312) 455-8498 (outside USA)

E: proteintech@ptglab.com
W: ptglab.com

This product is exclusively available under Proteintech Group brand and is not available to purchase from any other manufacturer.

Données de validation sélectionnées



1X10⁶ PMA and Ionomycin stimulated mouse splenocytes were surface stained with 5.00 ul CoraLite® Plus 488 Anti-Mouse CD69 (CL488-65105, Clone: H1.2F3) (red) or isotype control (blue). Cells were not fixed.