

À des fins de recherche uniquement

Anticorps Monoclonal anti-TCR Beta

Numéro de catalogue: CL488-65106



Informations de base

Numéro de catalogue:

CL488-65106

Taille:

100 tests, 5 µl/test

Hôte:

Armenian Hamster

Isotype:

IgG

Numéro d'acquisition GenBank:

Identification du gène (NCBI):

21577

Nom complet:

T-cell receptor beta chain

Méthode de purification:

Purification par affinité

CloneNo.:

H57-597

Dilutions recommandées:

IF 1:150-1:600

Excitation/Emission maxima

wavelengths:

493 nm / 522 nm

Applications

Applications testées:

IF, FC

Spécificité de l'espèce:

souris

Contrôles positifs:

IF : splénocytes de souris,

Informations générales

T-cell receptor (TCR) consists of heterodimeric glycoproteins (TCR alpha/beta or gamma/delta) that demonstrate homology with immunoglobulins (PMID: 2144901). TCR beta is a member of the immunoglobulin superfamily and is expressed on alpha/beta TCR-bearing T cells and thymocytes. The TCR heterodimers are noncovalently associated with CD3. The TCR/CD3 complex of T-lymphocytes consists of either a TCR alpha/beta or TCR gamma/delta heterodimer coexpressed at the cell surface with the invariant subunits of CD3 labeled gamma, delta, epsilon, zeta, and eta (PMID: 1826255). The TCR recognizes antigens bound to major histocompatibility complex (MHC) molecules. TCR-mediated peptide-MHC recognition is transmitted to the CD3 complex, leading to the intracellular signal transduction (PMID: 11985657).

Stockage

Stockage:

Stocker à une température comprise entre 2 °C et 8 °C. Éviter toute exposition à la lumière.

Tampon de stockage:

PBS avec azoture de sodium à 0,1 % et BSA à 0,5 %, pH 7,3.

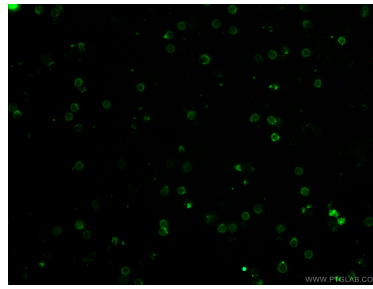
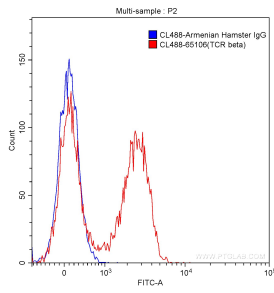
For technical support and original validation data for this product please contact:

T: 1 (888) 4PTGLAB (1-888-478-4522) (toll free in USA), or 1(312) 455-8498 (outside USA)

E: proteintech@ptglab.com
W: ptglab.com

This product is exclusively available under Proteintech Group brand and is not available to purchase from any other manufacturer.

Données de validation sélectionnées



1×10^6 C57BL/6 mouse splenocytes were surface stained with 5.00 μ l CoraLite® Plus 488-conjugated Anti-Mouse TCR beta (CL488-65106, Clone: H57-597) (red) or isotype control antibody (blue). Cells were not fixed.

Immunofluorescent analysis of mouse splenocytes using CoraLite® Plus 488-conjugated Anti-Mouse TCR beta (CL488-65106, Clone: H57-597) at dilution of 1:300.