

À des fins de recherche uniquement

Anticorps Monoclonal anti-CD38

Numéro de catalogue: **CL488-65107**



Informations de base

Numéro de catalogue:

CL488-65107

Taille:

100 tests, 5 µl/test

Hôte:

Mouse

Isotype:

IgG1, kappa

Numéro d'acquisition GenBank:

BC007964

Identification du gène (NCBI):

952

Nom complet:

CD38 molecule

MW calculé

300 aa, 34 kDa

Méthode de purification:

Purification par affinité

CloneNo.:

HB7

Dilutions recommandées:

IF 1:200-1:800

Excitation/Emission maxima

wavelengths:
493 nm / 522 nm

Applications

Applications testées:

FC, IF

Spécificité de l'espèce:

Humain

Contrôles positifs:

IF : cellules mononucléées de sang périphérique humain,

Informations générales

CD38, also known as ADP-ribosyl cyclase 1, is a type II transmembrane glycoprotein with a short N-terminal cytoplasmic tail, a single membrane-spanning domain, and a C-terminal extracellular region with four N-glycosylation sites (PMID: 2319135). The extracellular domain of CD38 has bifunctional enzyme activities that catalyze synthesis of cyclic ADP ribose from nicotinamide adenine dinucleotide (NAD) and hydrolysis of cyclic ADP ribose to adenosine diphosphoribose (PMID: 10636863). CD38 is expressed on a variety of hematopoietic and non-hematopoietic cells and is involved in diverse processes such as generation of calcium-mobilizing metabolites, cell activation, and chemotaxis (PMID: 25938500).

Stockage

Stockage:

Store at 2-8°C. Avoid exposure to light. Stable for one year after shipment.

Tampon de stockage:

PBS avec azoture de sodium à 0,1 % et BSA à 0,5 %, pH 7,3.

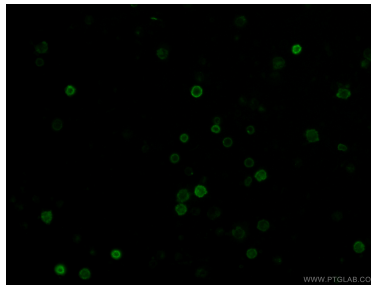
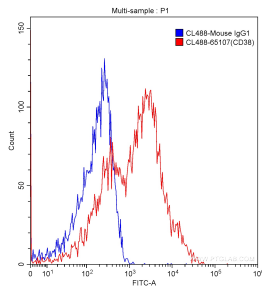
For technical support and original validation data for this product please contact:

T: 1 (888) 4PTGLAB (1-888-478-4522) (toll free in USA), or 1(312) 455-8498 (outside USA)

E: proteintech@ptglab.com
W: ptglab.com

This product is exclusively available under Proteintech Group brand and is not available to purchase from any other manufacturer.

Données de validation sélectionnées



100 ul human peripheral blood were surface stained 5.00 ul/test CoraLite® Plus 488-conjugated Anti-Human CD38 (CL488-65107, Clone:HB7) (red) or isotype control antibody (blue). Lymphocytes were gated for analysis. Cells were not fixed.

Immunofluorescent analysis of human peripheral blood mononuclear cells (PBMCs) using CoraLite® Plus 488-conjugated Anti-Human CD38 (CL488-65107, Clone:HB7) at dilution of 1:400.