

À des fins de recherche uniquement

Anticorps Monoclonal anti-CD38

Numéro de catalogue: **CL488-65111**



Informations de base

Numéro de catalogue: CL488-65111	Numéro d'acquisition GenBank: BC007964	Méthode de purification: Purification par affinité
Taille: 100tests , 5 µl/test	Identification du gène (NCBI): 952	CloneNo.: HIT2
Hôte: Mouse	Nom complet: CD38 molécule	Excitation/Emission maxima wavelengths: 493 nm / 522 nm
Isotype: Mouse IgG1, kappa	MW calculé 300 aa, 34 kDa	

Applications

Applications testées:
FC

Spécificité de l'espèce:
Humain

Informations générales

CD38, also known as ADP-ribosyl cyclase 1, is a type II transmembrane glycoprotein with a short N-terminal cytoplasmic tail, a single membrane-spanning domain, and a C-terminal extracellular region with four N-glycosylation sites (PMID: 2319135). The extracellular domain of CD38 has bifunctional enzyme activities that catalyze synthesis of cyclic ADP ribose from nicotinamide adenine dinucleotide (NAD) and hydrolysis of cyclic ADP ribose to adenosine diphosphoribose (PMID: 10636863). CD38 is expressed on a variety of hematopoietic and non-hematopoietic cells and is involved in diverse processes such as generation of calcium-mobilizing metabolites, cell activation, and chemotaxis (PMID: 25938500).

Stockage

Stockage:
Stocker à une température comprise entre 2 °C et 8 °C. Éviter toute exposition à la lumière.

Tampon de stockage:
PBS avec azoture de sodium à 0,1 % et BSA à 0,5 %, pH 7,3.

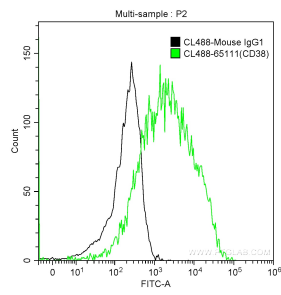
For technical support and original validation data for this product please contact:

T: 1 (888) 4PTGLAB (1-888-478-4522) (toll free in USA), or 1(312) 455-8498 (outside USA)

E: proteintech@ptglab.com
W: ptglab.com

This product is exclusively available under Proteintech Group brand and is not available to purchase from any other manufacturer.

Données de validation sélectionnées



1X10⁶ human peripheral blood lymphocytes were surface stained with 5 ul CoraLite® Plus 488-conjugated Anti-Human CD38 (CL488-65111, Clone: HIT2) (green) or isotype control antibody (black). Cells were not fixed.