

À des fins de recherche uniquement

Anticorps Monoclonal anti-CD8a

Numéro de catalogue: **CL488-65113**



Informations de base

Numéro de catalogue:

CL488-65113

Taille:

100tests , 5 µl/test

Hôte:

Mouse

Isotype:

IgG1, kappa

Numéro d'acquisition GenBank:

BC025715

Identification du gène (NCBI):

925

Nom complet:

CD8a molecule

MW calculé

235 aa, 26 kDa

Méthode de purification:

Purification par affinité

CloneNo.:

Hit8a

Dilutions recommandées:

IF 1:200-1:800

Excitation/Emission maxima
wavelengths:

493 nm / 522 nm

Applications

Applications testées:

FC, IF

Spécificité de l'espèce:

Humain

Contrôles positifs:

IF : cellules mononucléées de sang périphérique
humain,

Informations générales

CD8 is a transmembrane glycoprotein composed of two disulfide-linked chains. It can be present as a homodimer of CD8a or as a heterodimer of CD8a and CD8β (PMID: 3264320; 8253791). CD8 is found on most thymocytes. The majority of class I-restricted T cells express mostly the CD8aβ heterodimer while CD8aa homodimers alone have been found on some gut intraepithelial T cells , on some T cell receptor (TCR) γδ T cells and on NK cells (PMID: 2111591; 1831127; 8420975). CD8 acts as a co-receptor that binds to MHC class-I and participates in cytotoxic T cell activation (PMID: 8499079). During T cell development, CD8 is required for positive selection of CD4-/CD8+ T cells (PMID: 1968084).

Stockage

Stockage:

Store at 2-8°C. Avoid exposure to light. Stable for one year after shipment.

Tampon de stockage:

PBS avec azoture de sodium à 0,1 % et BSA à 0,5 %, pH 7,3.

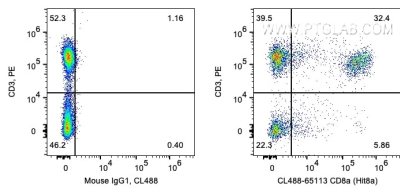
For technical support and original validation data for this product please contact:

T: 1 (888) 4PTGLAB (1-888-478-4522) (toll free
in USA), or 1(312) 455-8498 (outside USA)

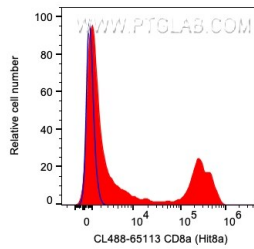
E: proteintech@ptglab.com
W: ptglab.com

This product is exclusively available under Proteintech Group brand and is not available to purchase from any other manufacturer.

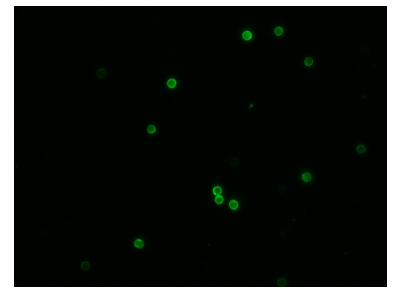
Données de validation sélectionnées



1X10⁶ human PBMCs were surface co-stained with PE Anti-Human CD3 and 5 ul CoraLite® Plus 488 Anti-Human CD8a (CL488-65113, Clone: Hit8a) or Mouse IgG1 Isotype Control. Cells were not fixed. Lymphocytes were gated.



1X10⁶ human PBMCs were surface stained with 5 ul CoraLite® Plus 488 Anti-Human CD8a (CL488-65113, Clone: Hit8a) or Mouse IgG1 Isotype Control. Cells were not fixed. Lymphocytes were gated.



Immunofluorescent analysis of human peripheral blood mononuclear cells (PBMCs) using CoraLite® Plus 488-conjugated Anti-Human CD8a (CL488-65113, clone: Hit8a) at dilution of 1:400.