

À des fins de recherche uniquement

Anticorps Monoclonal anti-CD161

Numéro de catalogue: CL488-65115



Informations de base

Numéro de catalogue:

CL488-65115

Taille:

100 tests, 5 µl/test

Hôte:

Mouse

Isotype:

IgG1

Numéro d'acquisition GenBank:

BC114516

Identification du gène (NCBI):

3820

Nom complet:

killer cell lectin-like receptor
subfamily B, member 1

MW calculé

225 aa, 25 kDa

Méthode de purification:

Purification par affinité

CloneNo.:

HP-3G10

Excitation/Emission maxima
wavelengths:

493 nm / 522 nm

Applications

Applications testées:

FC

Spécificité de l'espèce:

Humain

Informations générales

Stockage

Stockage:

Stocker à une température comprise entre 2 °C et 8 °C. Éviter toute exposition à la lumière.

Tampon de stockage:

PBS avec azoture de sodium à 0,1 % et BSA à 0,5 %, pH 7,3.

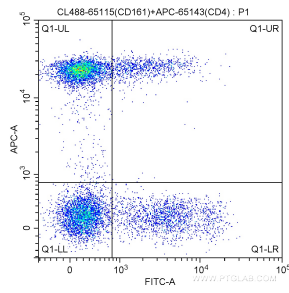
For technical support and original validation data for this product please contact:

T: 1 (888) 4PTGLAB (1-888-478-4522) (toll free
in USA), or 1(312) 455-8498 (outside USA)

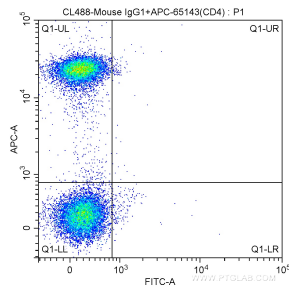
E: proteintech@ptglab.com
W: ptglab.com

This product is exclusively available under Proteintech Group brand and is not available to purchase from any other manufacturer.

Données de validation sélectionnées



100 ul human peripheral blood were surface stained with APC-Anti-Human CD4 (APC-65143, Clone: RPA-T4) and 5.00 ul CoraLite® Plus 488-conjugated Anti-Human CD161 (CL488-65115, Clone:HP-3G10). Lymphocytes were gated for analysis. Cells were not fixed.



100 ul human peripheral blood were surface stained with APC-Anti-Human CD4 (APC-65143, Clone: RPA-T4) and CoraLite® Plus 488-conjugated Mouse IgG1 isotype control antibody. Lymphocytes were gated for analysis. Cells were not fixed.