

À des fins de recherche uniquement

Anticorps Monoclonal anti-CD11b

Numéro de catalogue: CL488-65116



Informations de base

Numéro de catalogue:
CL488-65116

Taille:
100 tests, 5 µl/test

Hôte:
Mouse

Isotype:
IgG1, kappa

Numéro d'acquisition GenBank:
BC096346

Identification du gène (NCBI):
3684

Nom complet:
integrin, alpha M (complement
component 3 receptor 3 subunit)

MW calculé
1152 aa, 127 kDa

Méthode de purification:
Purification par affinité

CloneNo.:
ICRF44

Dilutions recommandées:
IF 1:200-1:800

Excitation/Emission maxima
wavelengths:
493 nm / 522 nm

Applications

Applications testées:
FC, IF

Spécificité de l'espèce:
Humain

Contrôles positifs:

IF : cellules mononucléées de sang périphérique
humain,

Informations générales

Integrins are cell adhesion receptors that are heterodimers composed of non-covalently associated α and β subunits (PMID: 9779984). CD11b, also known as Integrin alpha M or CR3A, belongs to the integrin alpha chain family. CD11b forms an α/β heterodimer with CD18 (integrin β 2). CD11b/CD18 is implicated in various adhesive interactions of monocytes, macrophages and granulocytes as well as in mediating the uptake of complement-coated particles and pathogens (PMID: 9558116; 20008295). CD11b/CD18 is a receptor for the complement protein fragment iC3b, and is also a receptor for fibrinogen, factor X and ICAM1 (PMID: 2971974; 15485828).

Stockage

Stockage:

Store at 2-8°C. Avoid exposure to light. Stable for one year after shipment.

Tampon de stockage:

PBS avec azoture de sodium à 0,1 % et BSA à 0,5 %, pH 7,3.

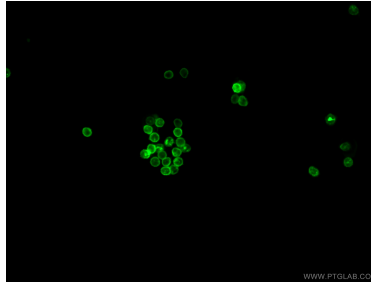
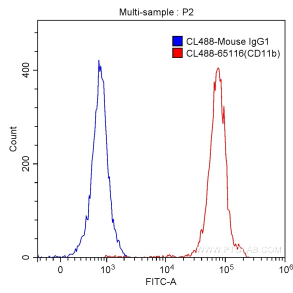
For technical support and original validation data for this product please contact:

T: 1 (888) 4PTGLAB (1-888-478-4522) (toll free
in USA), or 1(312) 455-8498 (outside USA)

E: proteintech@ptglab.com
W: ptglab.com

This product is exclusively available under Proteintech Group brand and is not available to purchase from any other manufacturer.

Données de validation sélectionnées



1X10⁶ human peripheral blood granulocytes were surface stained with 5.00 ul/test CoraLite® Plus 488-conjugated Anti-Human CD11b (CL488-65116, Clone: ICRF44) (red) or isotype control antibody (blue). Cells were not fixed.

Immunofluorescent analysis of human peripheral blood mononuclear cells (PBMCs) using CoraLite® Plus 488-conjugated Anti-Human CD11b (CL488-65116, Clone: ICRF44) at dilution of 1:400.