

À des fins de recherche uniquement

# Anticorps Monoclonal anti-IgG 1 Isotype Control



Numéro de catalogue: **CL488-65124**

## Informations de base

Numéro de catalogue:

CL488-65124

Taille:

100ug, 0.5 mg/mL

Hôte:

Mouse

Isotype:

IgG1

Numéro d'acquisition GenBank:

Identification du gène (NCBI):

16017

Nom complet:

immunoglobulin heavy constant  
gamma 1 (G1m marker)

Méthode de purification:

Purification par affinité

CloneNo.:

MOPC-21

Excitation/Emission maxima  
wavelengths:

493 nm / 522 nm

## Applications

Applications testées:

FC

Spécificité de l'espèce:

## Informations générales

The MOPC-21 immunoglobulin is useful as an isotype-matched control. The MOPC-21 immunoglobulin has an unknown binding specificity and is used as an isotype control for mouse IgG1 antibodies. This antibody has been quality-tested for flow cytometry as negative control.

## Stockage

Stockage:

Store at 2-8°C. Avoid exposure to light. Stable for one year after shipment.

Tampon de stockage:

PBS avec azoture de sodium à 0,1 % et BSA à 0,5 %, pH 7,3.

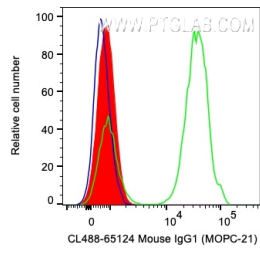
For technical support and original validation data for this product please contact:

T: 1 (888) 4PTGLAB (1-888-478-4522) (toll free  
in USA), or 1(312) 455-8498 (outside USA)

E: [proteintech@ptglab.com](mailto:proteintech@ptglab.com)  
W: [ptglab.com](http://ptglab.com)

This product is exclusively available under Proteintech Group brand and is not available to purchase from any other manufacturer.

## Données de validation sélectionnées



1X10<sup>6</sup> human PBMCs were surface stained with 0.2 ug CoraLite® Plus 488 Anti-Mouse IgG1 Isotype Control (CL488-65124, Clone: MOPC-21) (red), CL488 Anti-Human CD3 (green), or unstained (blue). Cells were not fixed. Lymphocytes were gated.