

À des fins de recherche uniquement

Anticorps Monoclonal anti-IgG2b Isotype Control



Numéro de catalogue: **CL488-65128**

Informations de base

Numéro de catalogue:

CL488-65128

Taille:

100ug, 0.5 mg/mL

Hôte:

Mouse

Isotype:

IgG2b

Numéro d'acquisition GenBank:

Identification du gène (NCBI):

16016

Nom complet:

immunoglobulin heavy chain 3
(serum IgG2b)

Méthode de purification:

Purification par affinité

CloneNo.:

MPC-11

Excitation/Emission maxima
wavelengths:

493 nm / 522 nm

Applications

Applications testées:

FC

Spécificité de l'espèce:

Informations générales

The MPC-11 immunoglobulin is useful as an isotype-matched control. The MPC-11 immunoglobulin has an unknown binding specificity and is used as an isotype control for mouse IgG2b antibodies. This antibody has been quality-tested for flow cytometry as negative control.

Stockage

Stockage:

Store at 2-8°C. Avoid exposure to light. Stable for one year after shipment.

Tampon de stockage:

PBS avec azoture de sodium à 0,1 % et BSA à 0,5 %, pH 7,3.

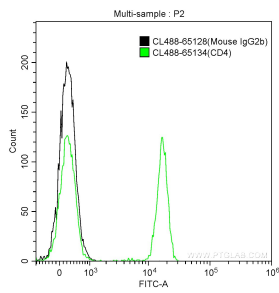
For technical support and original validation data for this product please contact:

T: 1 (888) 4PTGLAB (1-888-478-4522) (toll free
in USA), or 1(312) 455-8498 (outside USA)

E: proteintech@ptglab.com
W: ptglab.com

This product is exclusively available under Proteintech Group brand and is not available to purchase from any other manufacturer.

Données de validation sélectionnées



1X10⁶ human peripheral blood lymphocytes were surface stained with 0.5 ug CoraLite® Plus 488 Mouse IgG2b Isotype Control (CL488-65128, Clone:MPC-11) (green) or 0.5 ug CoraLite® Plus 488-conjugated Anti-Human CD4 (CL488-65134, clone: OKT4) (black). Cells were not fixed.