

À des fins de recherche uniquement

Anticorps Monoclonal anti-CD8a

Numéro de catalogue: **CL488-65144**



Informations de base

Numéro de catalogue:

CL488-65144

Taille:

100tests , 5 µl/test

Hôte:

Mouse

Isotype:

IgG1

Numéro d'acquisition GenBank:

BC025715

Identification du gène (NCBI):

925

Nom complet:

CD8a molecule

MW calculé

235 aa, 26 kDa

Méthode de purification:

Purification par affinité

CloneNo.:

RPA-T8

Excitation/Emission maxima
wavelengths:

493 nm / 522 nm

Applications

Applications testées:

FC

Spécificité de l'espèce:

Humain

Informations générales

CD8 is a transmembrane glycoprotein composed of two disulfide-linked chains. It can be present as a homodimer of CD8a or as a heterodimer of CD8a and CD8β (PMID: 3264320; 8253791). CD8 is found on most thymocytes. The majority of class I-restricted T cells express mostly the CD8aβ heterodimer while CD8aa homodimers alone have been found on some gut intraepithelial T cells , on some T cell receptor (TCR) γδ T cells and on NK cells (PMID: 2111591; 1831127; 8420975). CD8 acts as a co-receptor that binds to MHC class-I and participates in cytotoxic T cell activation (PMID: 8499079). During T cell development, CD8 is required for positive selection of CD4-/CD8+ T cells (PMID: 1968084).

Stockage

Stockage:

Stocker à une température comprise entre 2 °C et 8 °C. Éviter toute exposition à la lumière.

Tampon de stockage:

PBS avec azoture de sodium à 0,1 % et BSA à 0,5 %, pH 7,3.

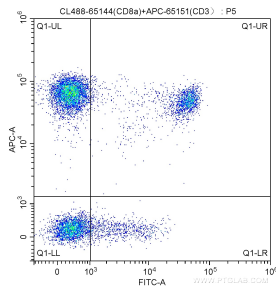
For technical support and original validation data for this product please contact:

T: 1 (888) 4PTGLAB (1-888-478-4522) (toll free
in USA), or 1(312) 455-8498 (outside USA)

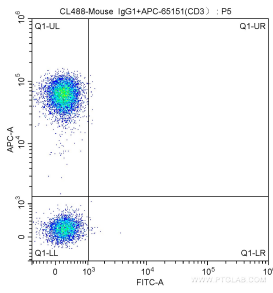
E: proteintech@ptglab.com
W: ptglab.com

This product is exclusively available under Proteintech Group brand and is not available to purchase from any other manufacturer.

Données de validation sélectionnées



100 ul human peripheral blood were surface stained with APC Anti-Human CD3 (APC-65151, Clone: UCHT1) and 5.00 ul CoraLite® Plus 488-conjugated Anti-Human CD8a (CL488-65144, Clone: RPA-T8). Lymphocytes were gated for analysis. Cells were not fixed.



100 ul human peripheral blood were surface stained with APC Anti-Human CD3 (APC-65151, Clone: UCHT1) and CoraLite® Plus 488-conjugated Mouse IgG1 isotype control antibody. Lymphocytes were gated for analysis. Cells were not fixed.